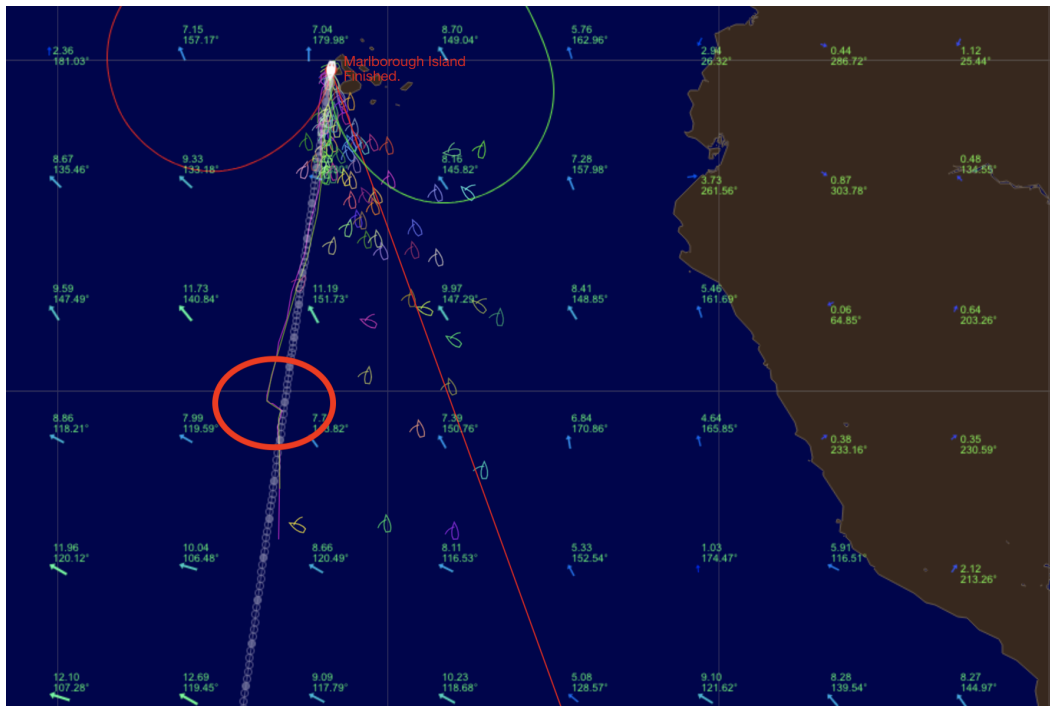


### Cross the Convergence 2026 - Robinson Crusoe to Galapagos

Thanks to Sailonline and the captains who sail in this great fleet. It was a very intense race from the start. Two clearly defined routes from the beginning: east or west. The west course looked very slow and unpleasant for the first four days, then it seemed to improve.

I just had to find the precise moment to stop sailing NNW and head to NNE. The moment didn't appear, but I knew that if I rushed it, I would ruin everything. Around the halfway point of Peru, I was sailing NNW, planning to continue for another hour, when the window to head to NNE opened up. I hurried to change course.



From that moment on, the weather smiled on me and carried me NNE.

In the last 12 hours, I had to achieve a good sailing angle to finish at mark B, which was always my chosen course. The threat of the boats from E was there; they were ready to sink their teeth into me (Lol). I knew I had to relinquish first place and look for a finishing angle to the NNW. I went from first to fourth with every course change; it was painful.



Other captains frequently accelerated to the ENE, which made me very nervous, but I believed they were walking into a trap; returning from there would be very difficult for them. Once I reached the final tack, on the way to the finish, I had to maintain my maximum VMG speed to be more at ease later. Finally, I must say that in difficult moments, being accompanied by great captains calmed me down.

Final thoughts: In the last 12 hours, the attack from the NE was worrying, but my real fear was being attacked from the NO. That would have required more specialized cover. I think, luckily, the eagerness to gain positions in the NE fooled the competitors.

Thanks again, and see you at the next race.

MB007