

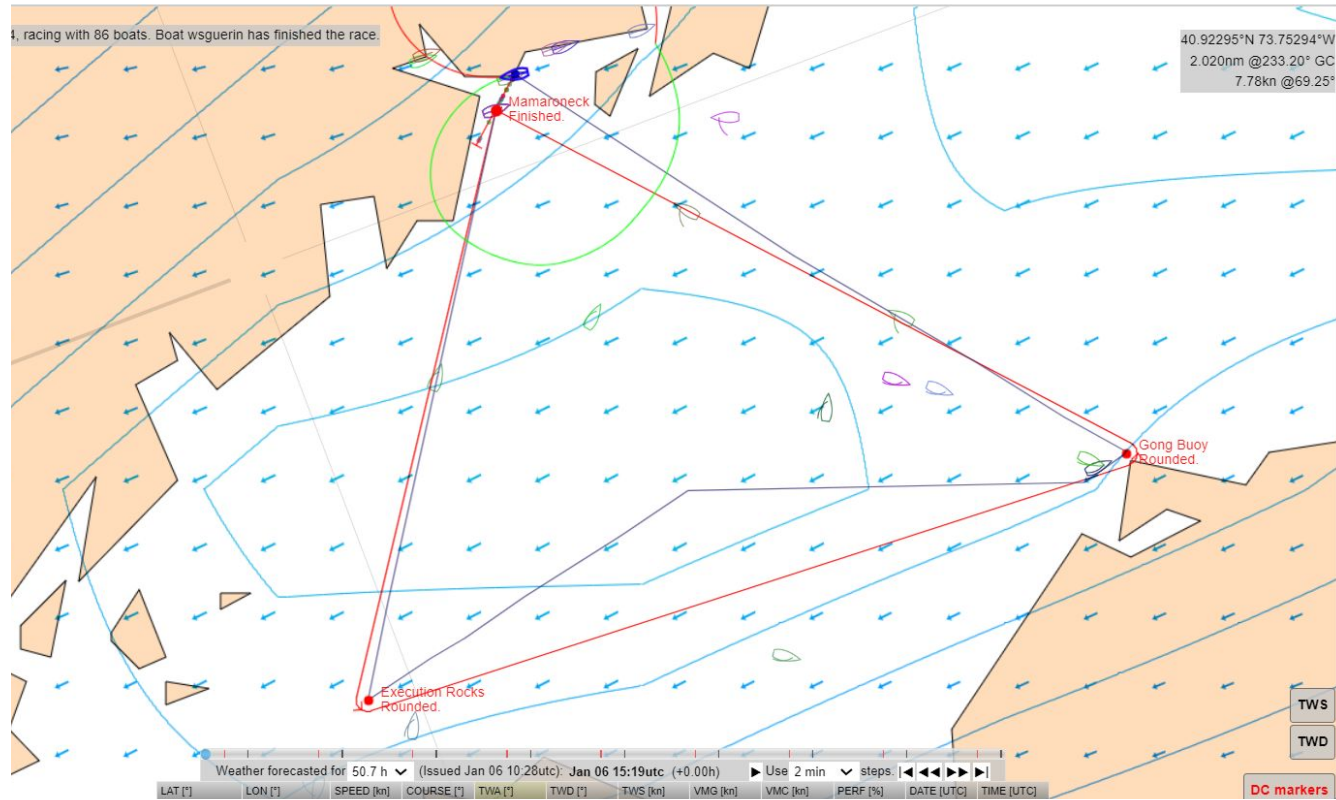
Frostbite Finesse

For the first of 2024's Sprint series, we found ourselves in a 9' Dyer Dhow on the course used by Mamaroneck Frostbite Association (MFA) racers.

While we don't race in the open Sound, the Harbor gives us room for a bunch of 10-20 minute races with 20-30 boats on the line in two fleets. If you are around in the winter, drop me an email, we'll put you in a boat!

This year's race had a steady 7 to 10kts of wind from the West, perfect for our IRL large sails. The course was a big triangle and each leg was a reach or downwind.

A big shout out to Bonknhoot who helped me design a polar and did the required mathematical operations to make it into a SOL-ing craft a year or two ago!



Lights, Camera, Kaboom

This is a video of the dinghy we were sailing, in similar conditions.

[Click above](#)



Leg 1

In a short race against timed race and sprint champions, the turns had to be spot on.

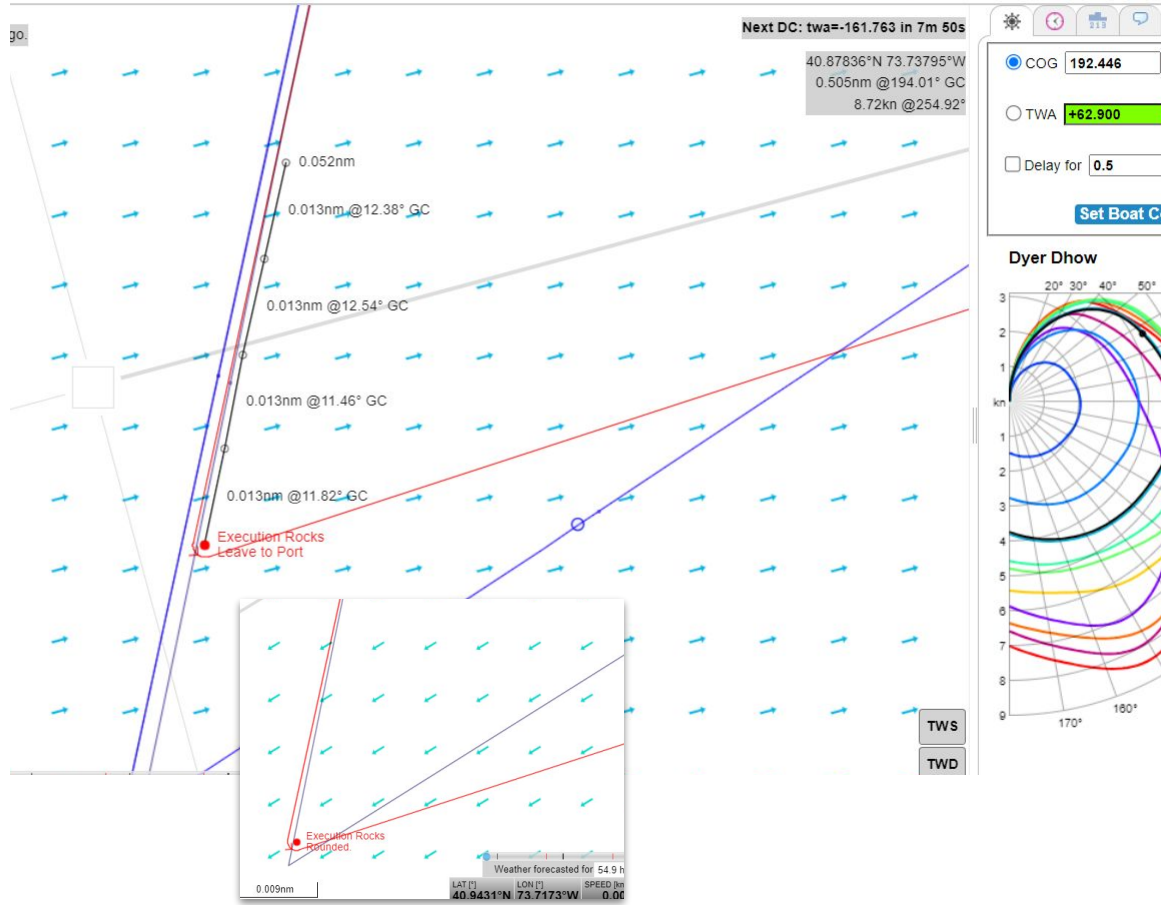
I use a technique where I measure the jumps the SOL boat makes every ~10 seconds. In this race the distance per jump was .013 nm/jump. I do this some 15 mins out from the mark.

As shown at right, I then use the ruler tool to space out, from my turning point, .013nm divisions.

To help ensure timely command response, I alter course by .001 degrees before entering the ruled zone.

What I hope for is that the command boat jumps just past the nearest dot. I had a good turn just .003nm past the mark.

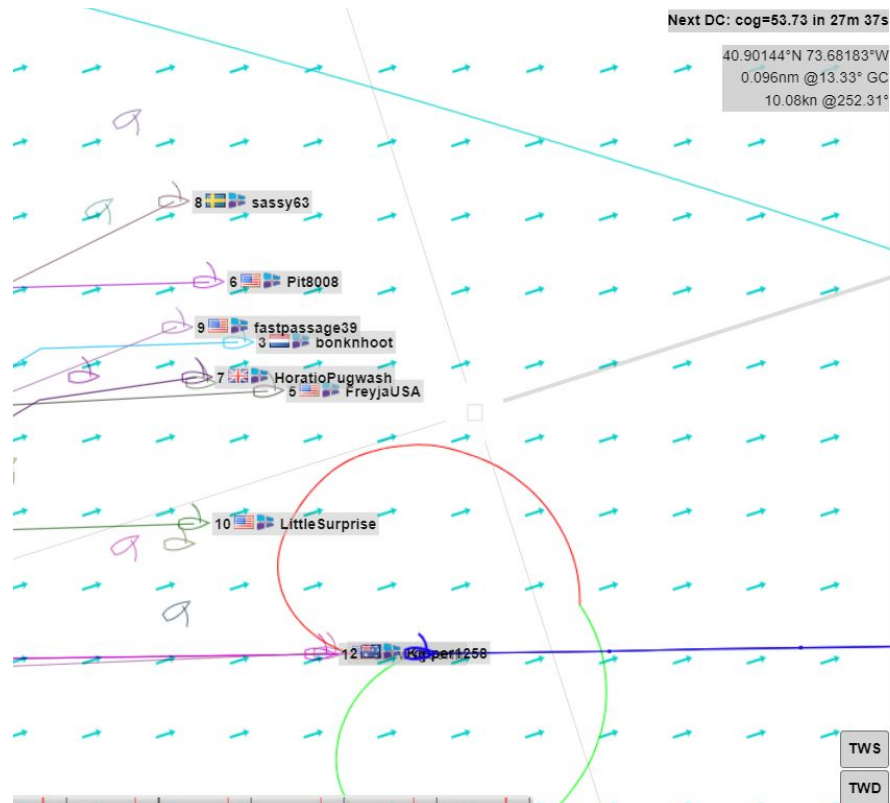
Anyway... WS rounded in ~6th in a tight pack.



Leg 2

I gybed early (and all alone) in the center of a wind lane but that strategy would require a second gybe to go up to the mark...nearly my banana peel.

Others stayed north knowing a tight turn at the gong buoy lay ahead.



Main Fleet				
Search				
#	Name	DTF	DBL	LOG
1	wsguerir	6.77	0.00	6.63
2	Kipper1258	6.77	0.01	6.63
3	bonknhoot	6.79	0.02	6.61
4	rafa	6.79	0.02	6.59
5	FreyjaUSA	6.78	0.03	6.64
6	Pit8008	6.80	0.03	6.64
7	HoratioPugwash	6.81	0.04	6.60
8	sassy63	6.82	0.04	6.62
9	fastpassage39	6.82	0.04	6.62
10	Little Surprise	6.81	0.04	6.63
11	pukeslip	6.82	0.05	6.63
12	WRmirekd	6.83	0.05	6.62
13	AndyS172	6.82	0.06	6.61
14	sailj29	6.81	0.06	6.64
15	Comocean	6.84	0.07	6.62
16	Chipsplitter	6.84	0.07	6.56
17	CollegeFund	6.85	0.08	6.62
18	MaxStarostin	6.89	0.12	6.60
19	Sax747	6.94	0.16	6.57
20	sabbi	6.93	0.18	6.72
21	CriticalHippo	6.96	0.19	6.53
22	weekend	7.00	0.20	6.36
23	Extractor	6.99	0.22	6.54
24	Sime	7.03	0.25	6.56
25	Mackle	7.03	0.26	6.59
26	capt420	7.25	0.46	6.62

OZ NZ
USA
watch

Leg 3 (exaggerated for clarity)

WSG is in **blue** and you can see that hockey stick gybe to lower right, I had an OK turn at least. QT was saying “stay high then arc down”, which I lightly followed while Bonk and others in **red** stayed low.

At the turn I was in 7- 8th and my position didn't improve until I angled down to the line. Over the last 2nm of the leg, I reeled in a few boats to land in 3rd, 3 seconds behind Bonknhoot and 4 seconds ahead of Doug/Freyja.

College fund followed QT's bigger arc and said they caught 6 boats so that is something to remember: QT or not QT, to cover, or not to cover.

Fair winds all, SOL on

