

Archer 78

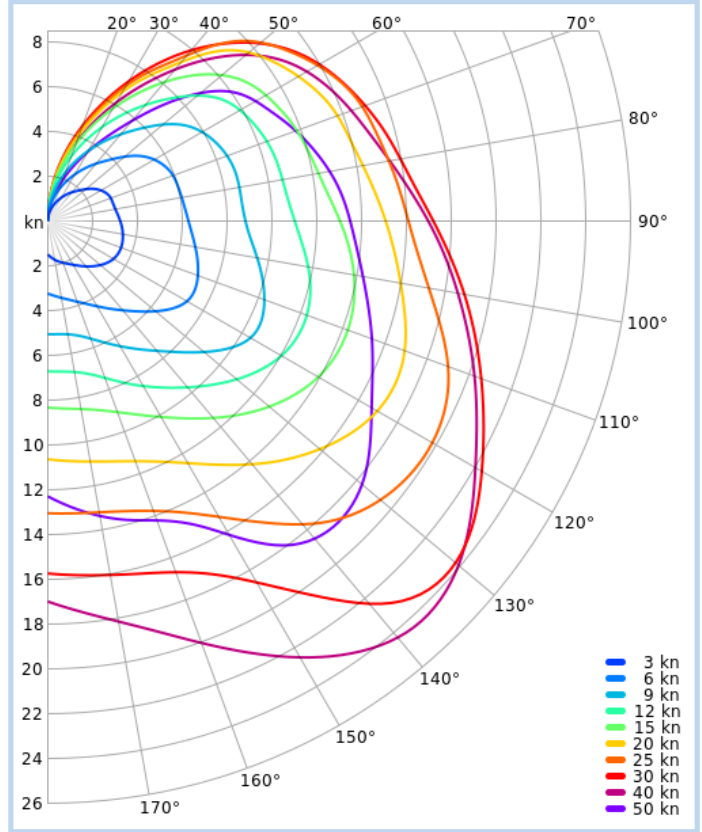
GENERAL ARRANGEMENT



ACTION PHOTO



POLAR DIAGRAM



SOL RACE RECORD

“Beowulf, the 78-foot, water-ballasted ketch, simply had to exist. She was our perfect cruising yacht. All that boat, as much as 6,000 square feet of sail, and just two of us: impossible, you say. But it was possible, and we did it, with great care and respect, as Beowulf had the power to take over the game at any point,” said Steve and Linda Dashew on retiring from their second life of bluewater high performance cruising.

Built in 1997 by Kelly Archer Boatbuilders from New Zealand to the Dashew’s own design, she (still, 2023) holds the short-handed record for several ocean passages, such as California to the Marquesas and Guadeloupe to Antigua, and now you can sail her on SOL as well. Have a blast!

Racelist