

Dyer Dhow Derby

Smo Race Report

Classic dinghy race at winter, something that Smo might do IRL :)

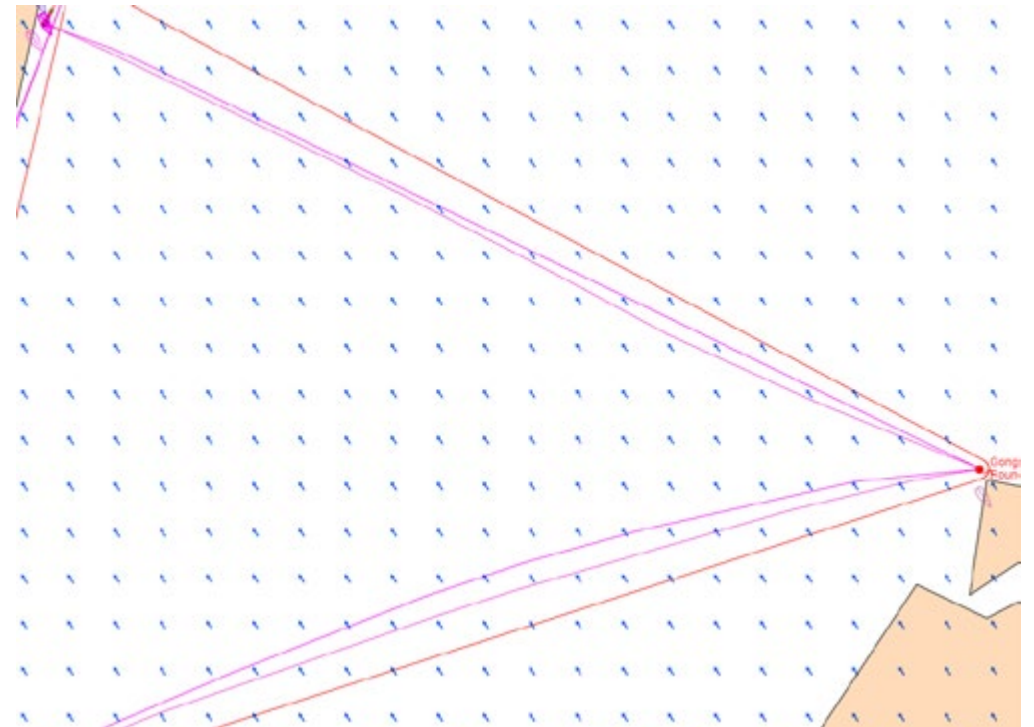
Start was 22.00 Smo-time. As Smo says, Just DC It. This time WX update just after start did ruin my DC's, luckily checked in. Many boats headed straight to mark but there was a possibility to sail better angle that Smo did. Set DC's around track after WX update and GOTO sleep.

Did not sleep yet, checked race and had rounded first WP very well but DC aware predictor was showing Smo would just miss second WP. Maybe it was not sharp as I had set variable TWA curve with some DC's.

Had to adjust DC's to get predictor around second mark, lazily did not check winds after second WP carefully but just a straight DC from WP to finish line.

Probably TWA Curve was too deep (you can see difference in picture compared to winner) and / or wind angle from second WP to finish not so good as I lost little.

Happened to wake up before finish line so adjusted course closer to the end of finish line to get better angle for last meters and fell back to sleep. Nice to wake up at #2.



Smo thanks Race Comittee and organiser wsguerin & Mamaroneck Frostbite Association for this nice opportunity.