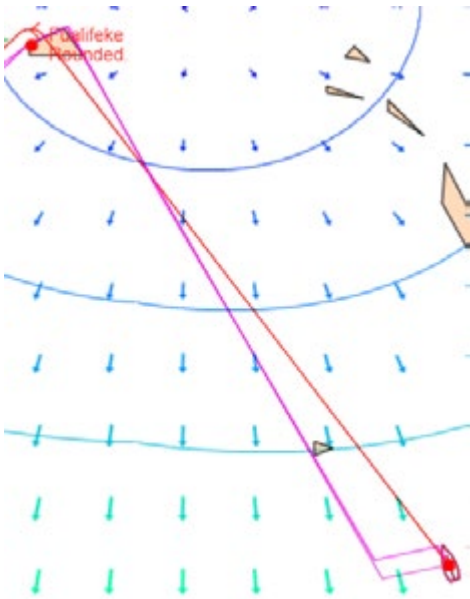
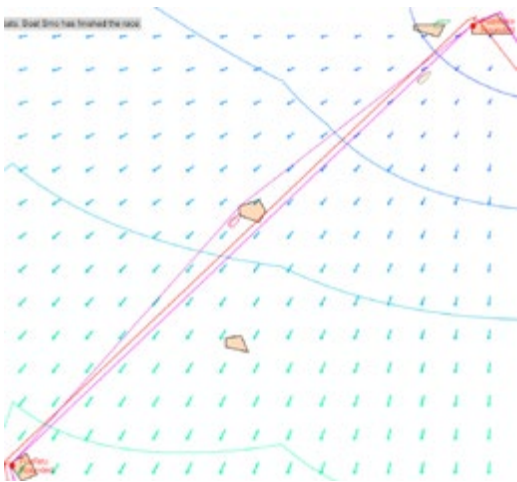


## Tuvalu Sprint Report by Smo

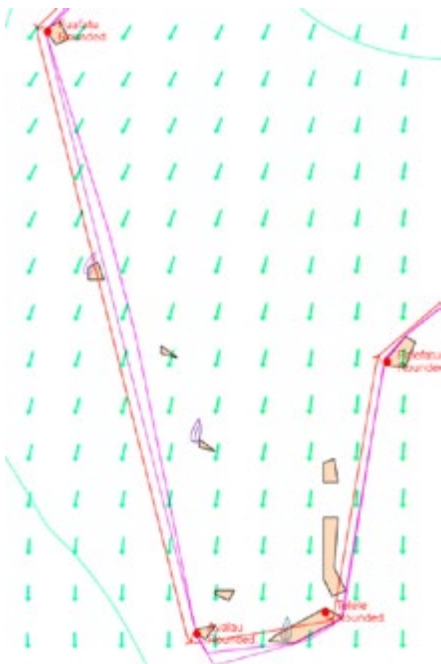
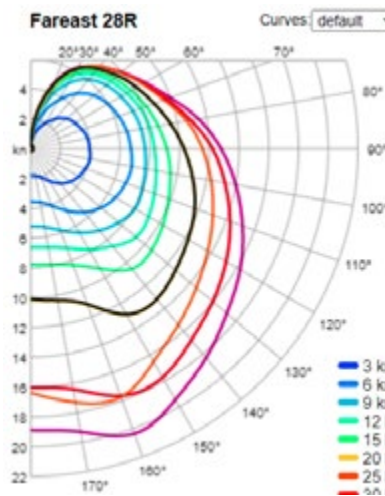


Podium, long time no see :)

Started NW because of wind shift and predictor curve but soon realised that as route turns SW after mark it might be good idea to use that direction from start not to sail "away" from route at WP. That might have helped as I was around top after WP.



Here was island and did not notice windshift, was sailing straight to next WP while many like winner WRmirekd passed that island north to get better angle. Luckily polar was very high pointing and Smo had to pinch only one or two deg just before mark.



After that WP many sailed straight line while Smo did banana curve sailing first lower to get more speed, might have gained second there :D. WR went long at next WP while Smo gybed to VMG, maybe because of polar speed WR did not loose there. Some boats went round route between Telele and Falefatu like #3 Sax while Smo went straight and WR too. Sharp enough roundings and finally Smo lost three seconds on WRmirekd finishing on same second with Sax747 server deciding Smo was before. #4 Vida\_Maltida lost two seconds on Smo and #5 sassy63 three so extreme tight it was. Thank you for a nice company.