

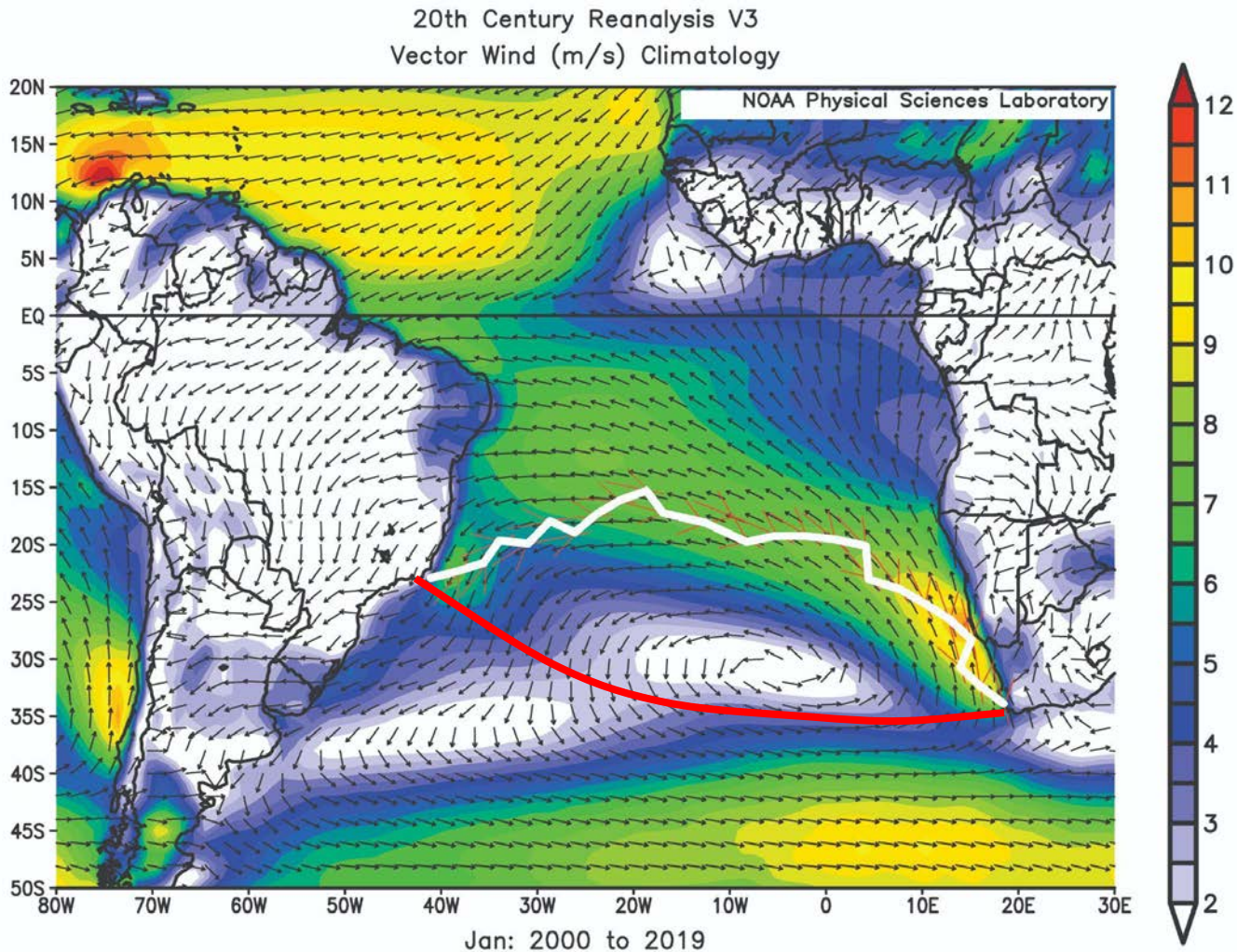
The Road to Rio

Intro

As usual for an ocean race, I downloaded the historical winds which, in terms of speed, seductively pointed to a northerly route.

Not being able to import the historical GRIB, I manually laid out the best downwind VMG across the course resulting in the white sawtooth. Rhumbline is in red.

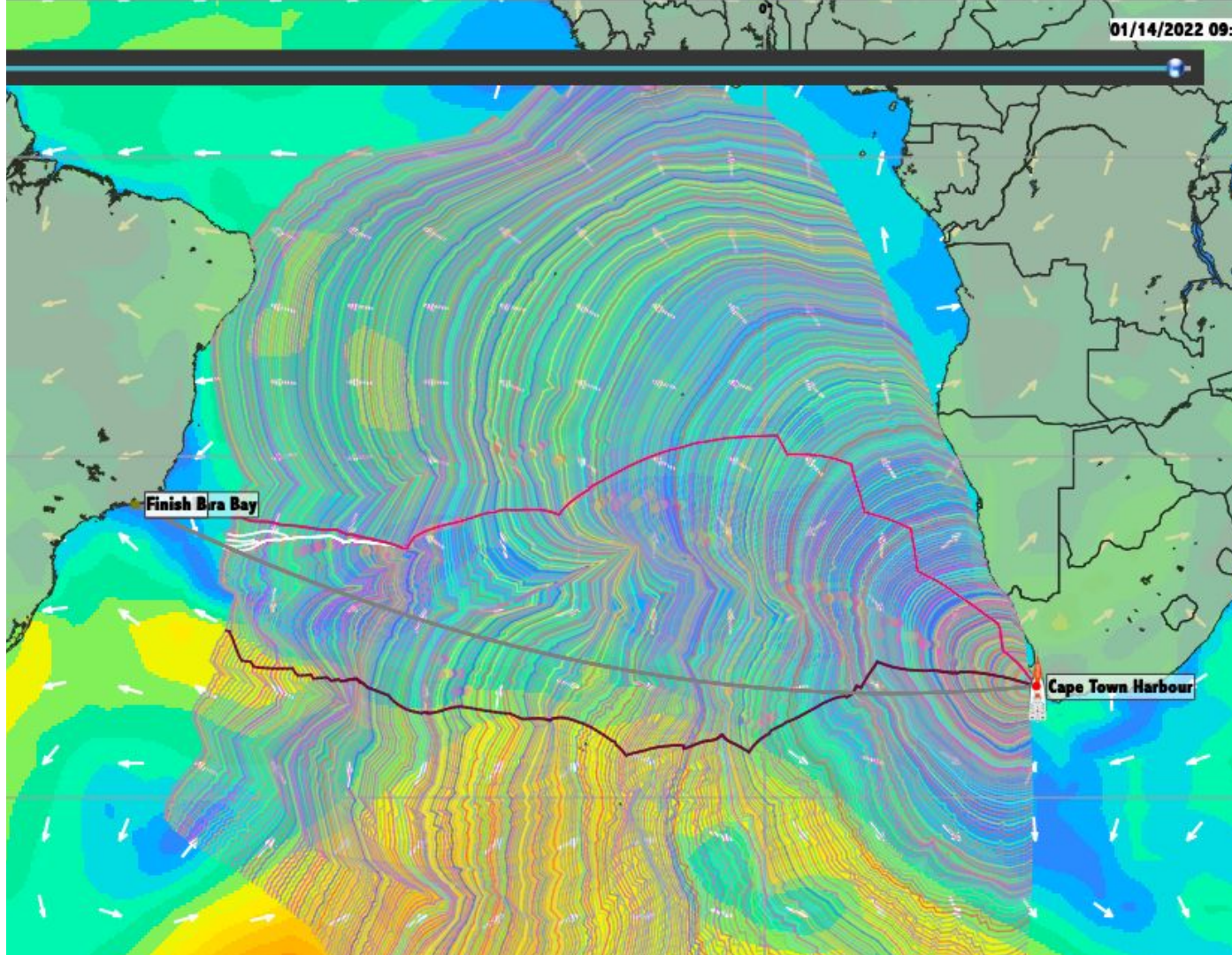
But QT had other ideas and I resolved to follow her lead with occasional tugs on the leash.



Phase 1

Head scratching

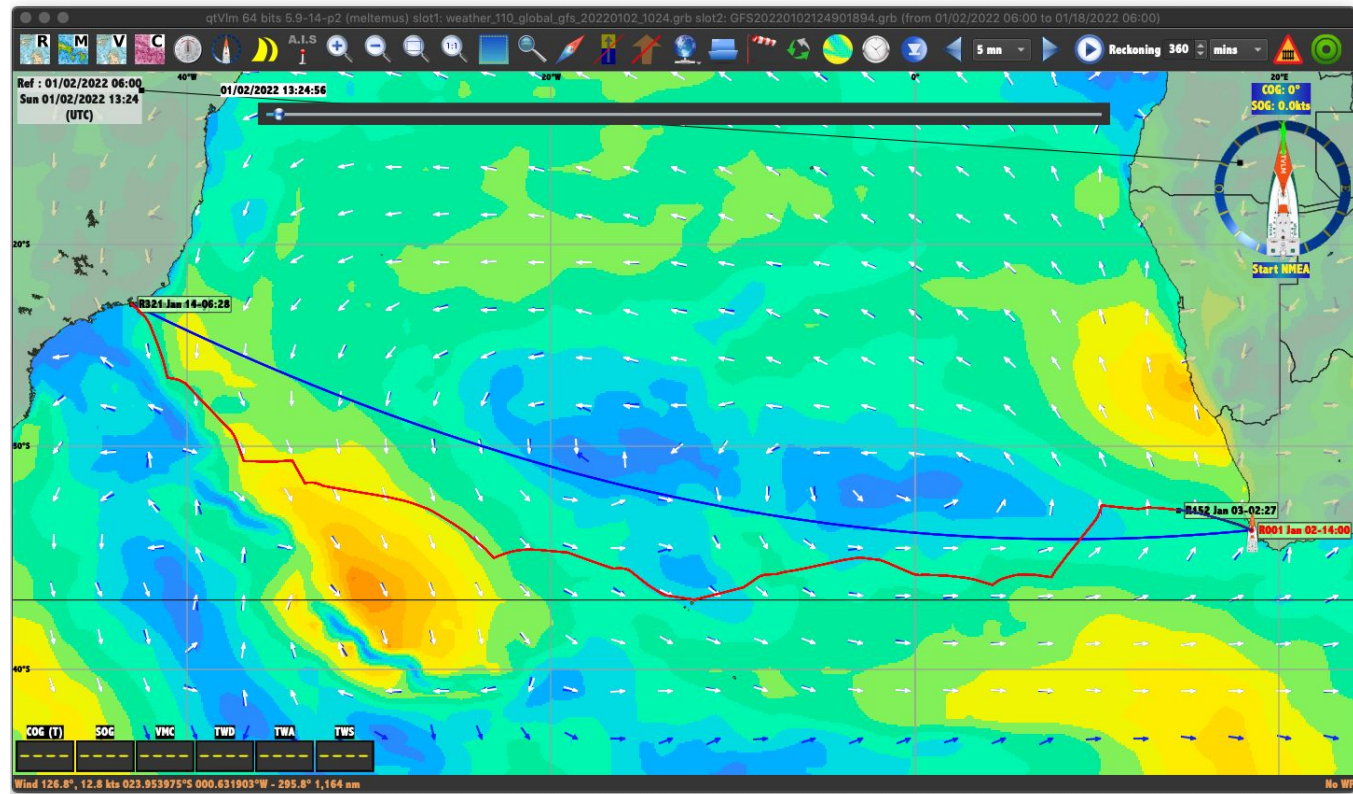
In the days before the start the route varied wildly from the northern course, uncannily like my manual routing, to a south of the rhumbline course.



Phase 1

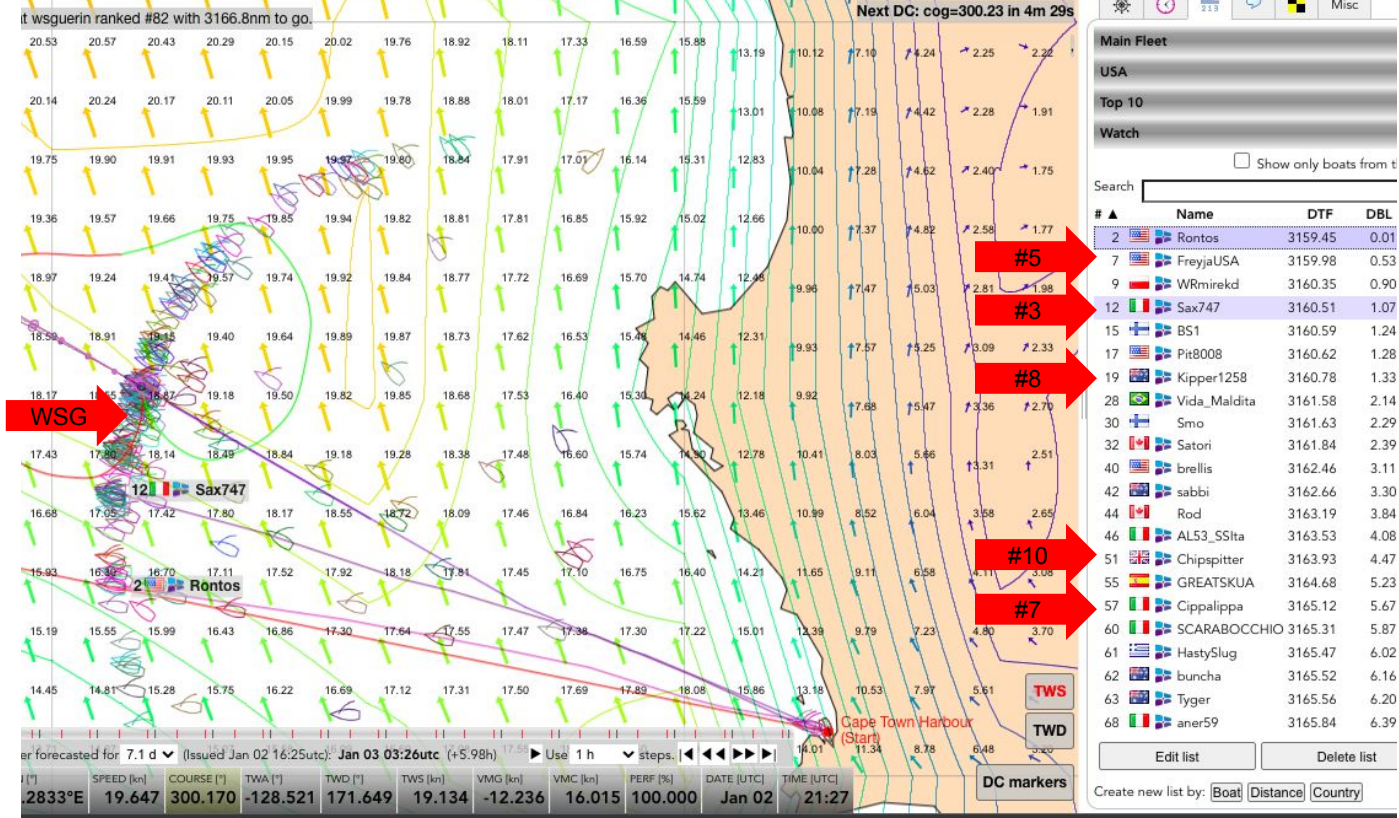
Commitment

My final pre-start route pointed northwest then a gybe back southwest and a long haul west to Rio.



The scattering

WSG is in 82nd and finished 22nd.

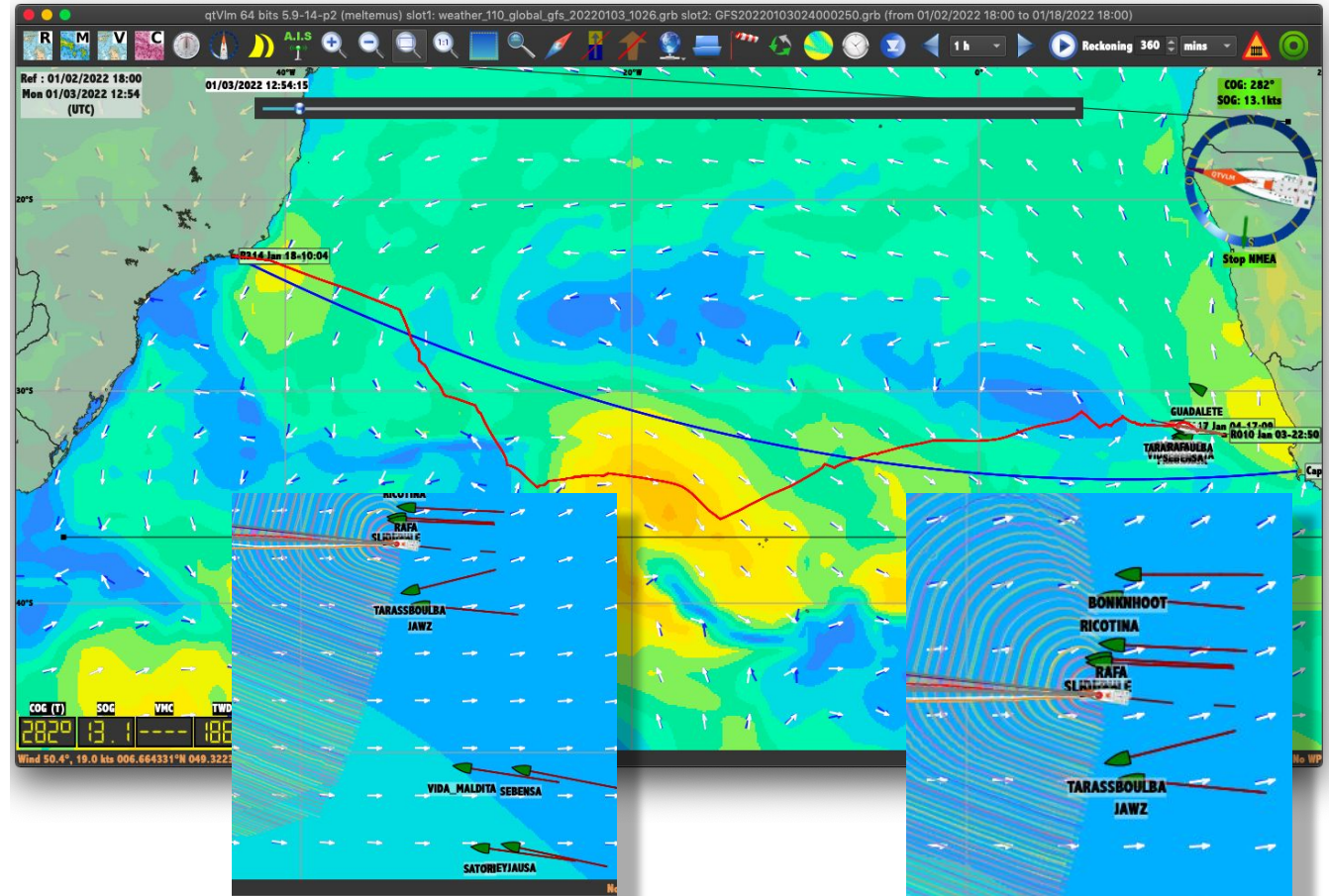


Phase 1

Mid North Fleet

Routing settled down a bit once we started and were off shore.

A small QT tip: I like the rhumbline drawn on the course. You can draw a line between POIs by right clicking on the starting POI and "Draw a line to another POI" selected from the dropdown mark menu.

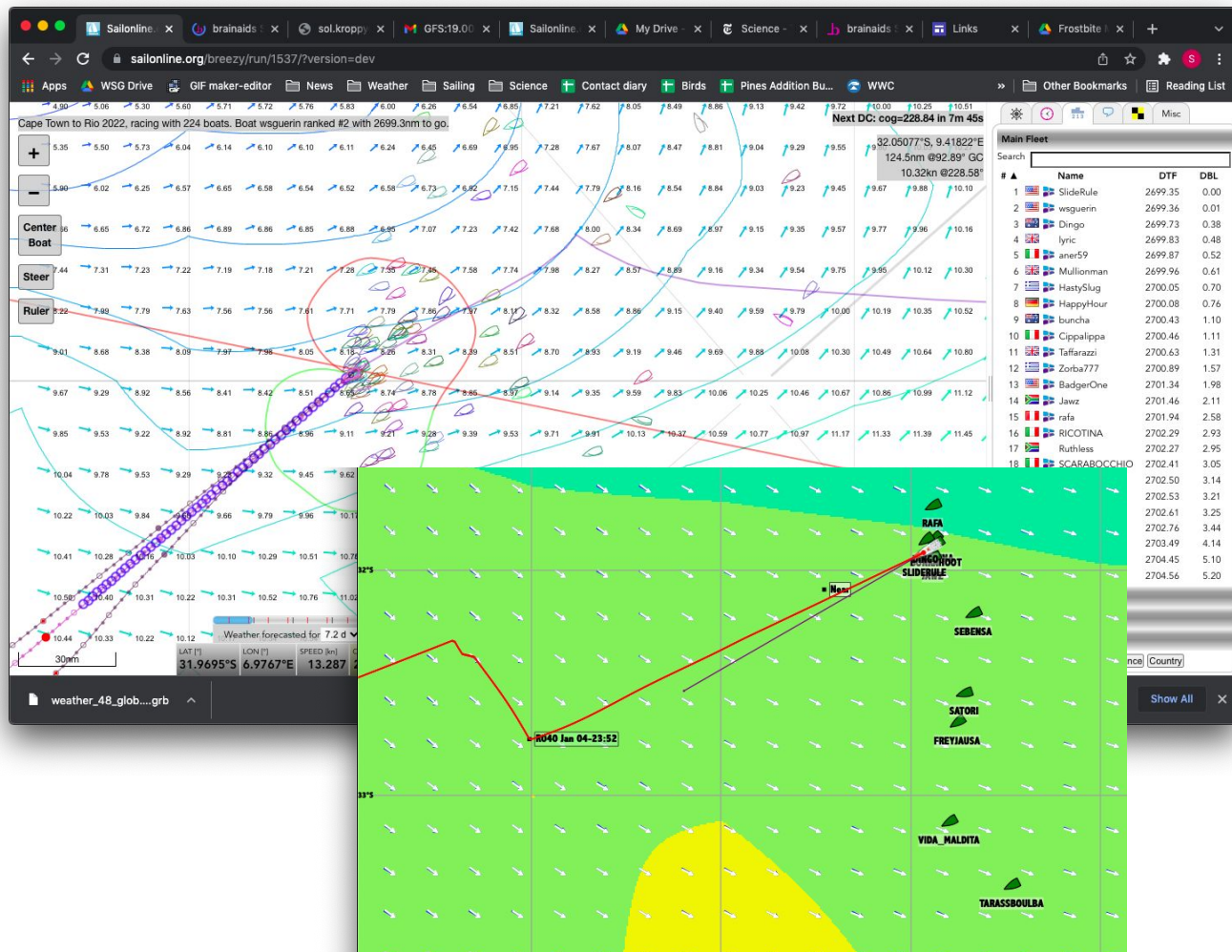


Phase 2

The Gybe South

I typically ran full courses using a 1 minute crank, with isochrons of 120 minutes for greater than 24 hours and 60 minutes for less than 24 hours. Then I'd run 10 minute routes for 2-3 WX out.

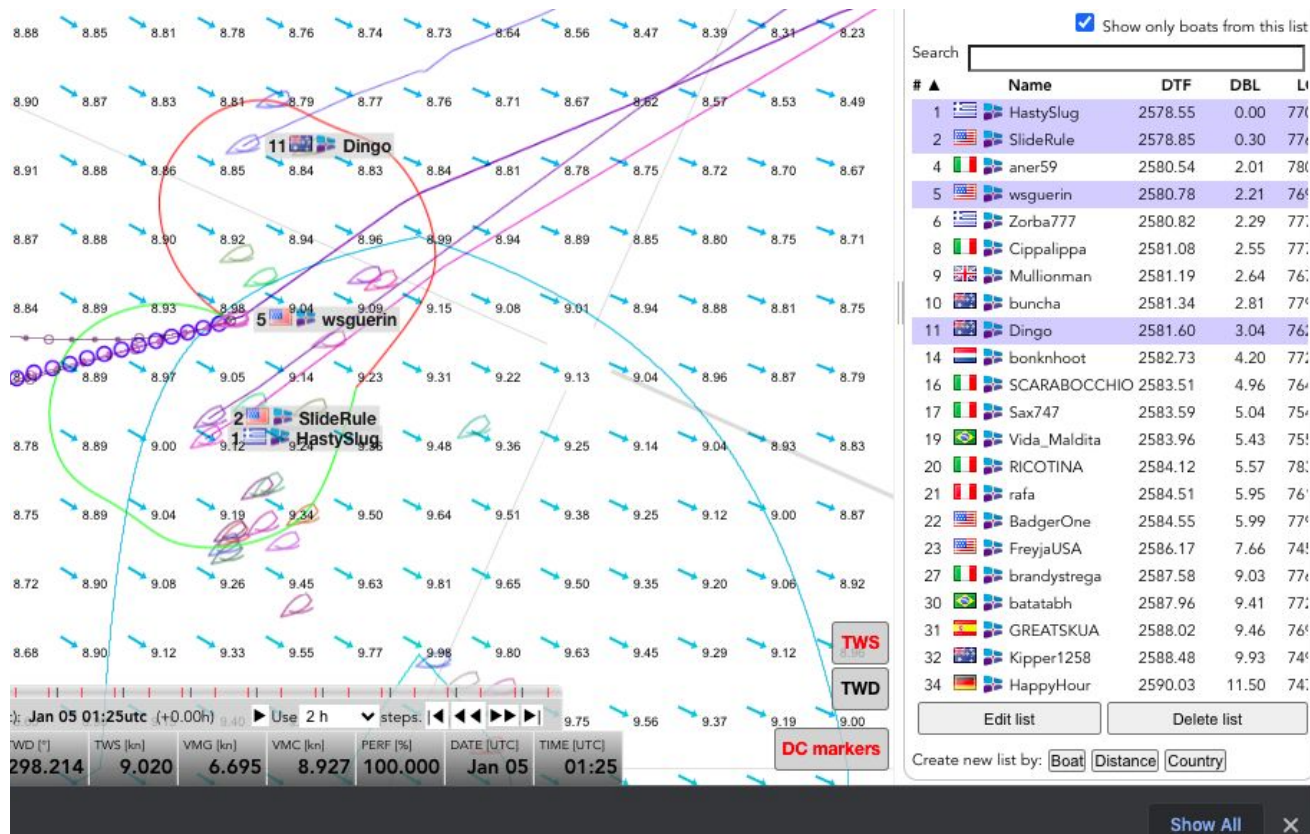
If I saw better wind on SOL's chart, I'd set a near POI in that direction. Like an addict, I favored 24 hour speed over the long-range course, a fatal mistake!



Phase 2

The Doubts

*QT's done me right,
No reason to fight
But Hasty and Slide give me doubts
Do I follow them south?
Or stay my own route?
Is Dingo on track in his night?*



Phase 3

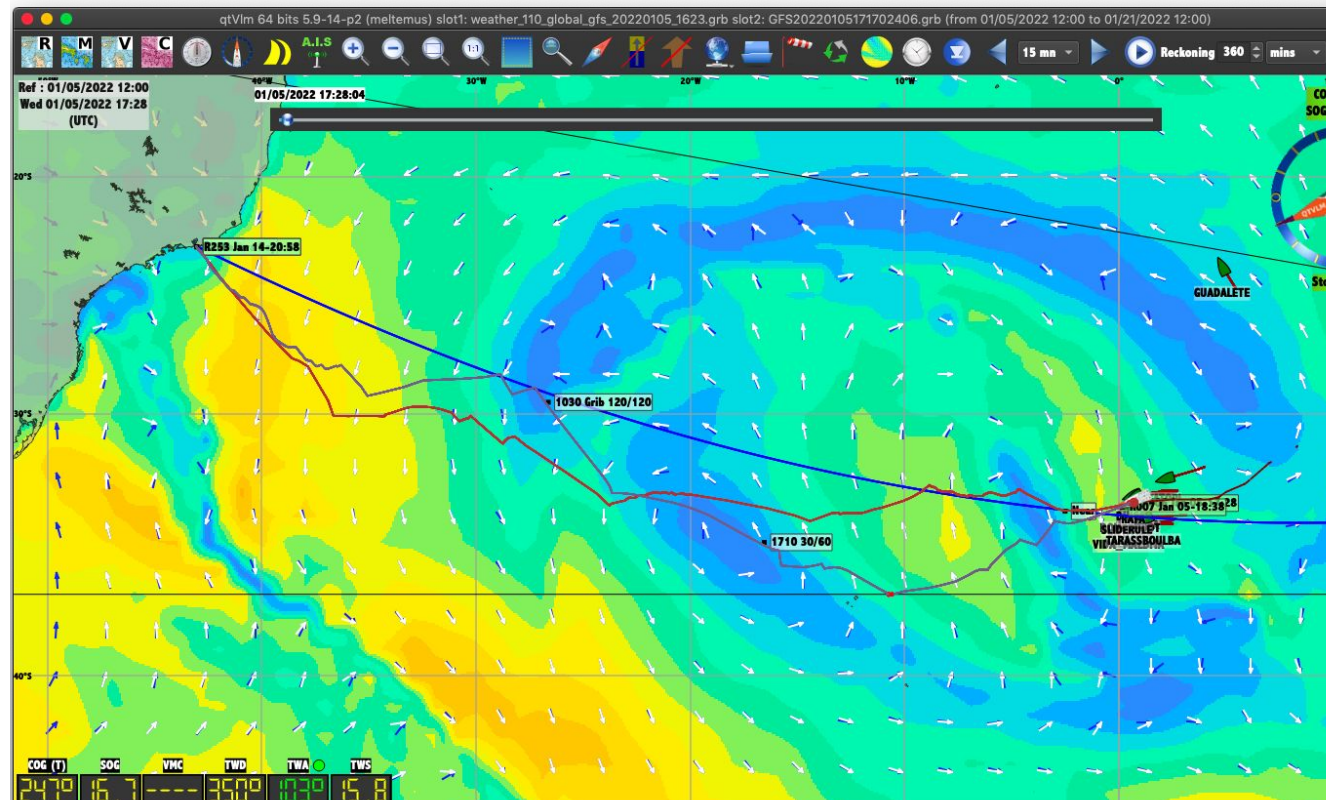
The Decision Point

January 5th, 1630 WX was a key point in the race. The wall of blue meant heading south around it or north.

I opted north and it looked good for several days.

A message to you QT

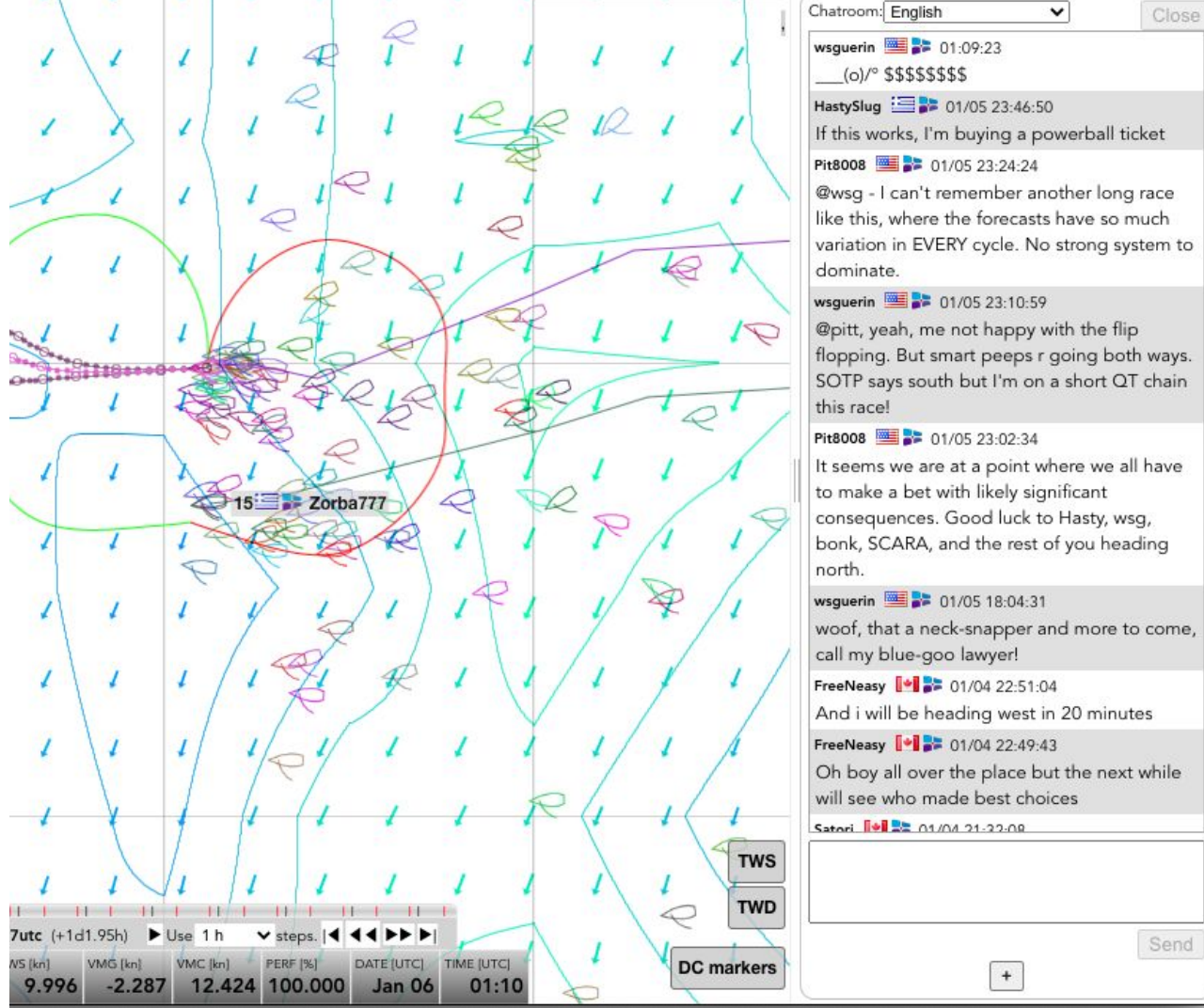
*Stop your messing around;
Gotta think of my future;
Time to put in a route;
High Pressure's giving me doubts;
Cue Tee;
A message to you Cue Tee;*



Phase 3

The Split

As can be read in the chat, there was a fair amount of discussion on which way to go.



Phase 4

North-ish

Here's a Jan 6 0110 view of our positions in the mid-North. There were quite a few skippers further north, Guadalete comes to mind but they quickly fell back.



Below, the chart shows the top ten in the north at Jan 6 1203, finishing positions are shown in the red circles.

Clearly, Mullion and Bonk bailed at some point! I would love to know what they routed, anticipated, or guessed at this juncture.

