

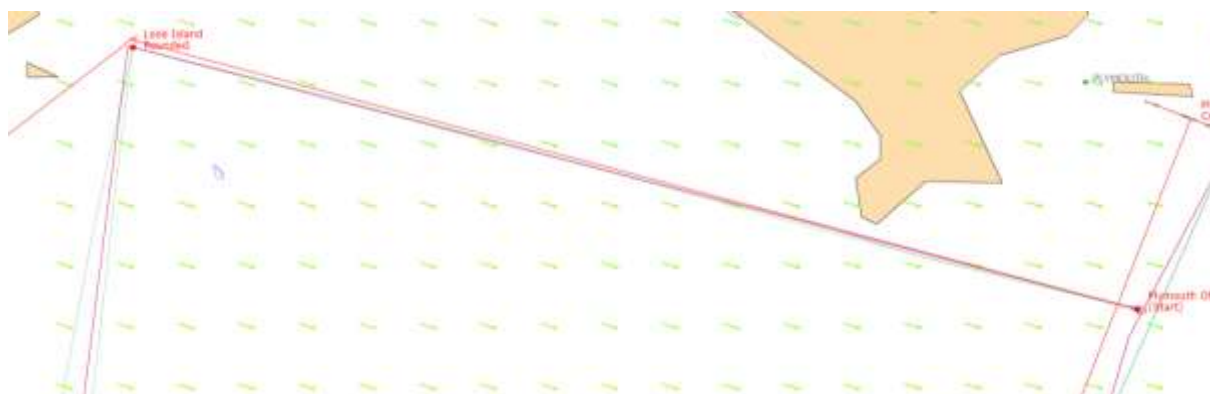
# Fisherman's Friend 2019

## Report



Another very interesting but also very demanding and tiring race. If it wasn't for the weekend, I probably wouldn't decide to start.

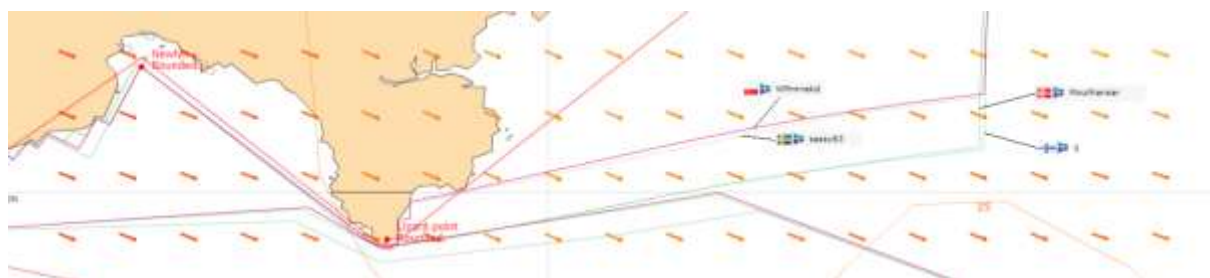
The start and first leg to Looe Island was simple and obvious. It could not choose a determined leader.



The analysis of the further path prompted me that it would be important to make perfect turns on the next course marks. I looked with envy at the turns made on the first mark by **ij** and **Mouthansar**. Although the way and the moment they were performed didn't matter much at the Looe Island mark, I was very afraid of turns, especially at Wolff Rock, Hurd Deep, Brixham and Eddystone Lighthouse.

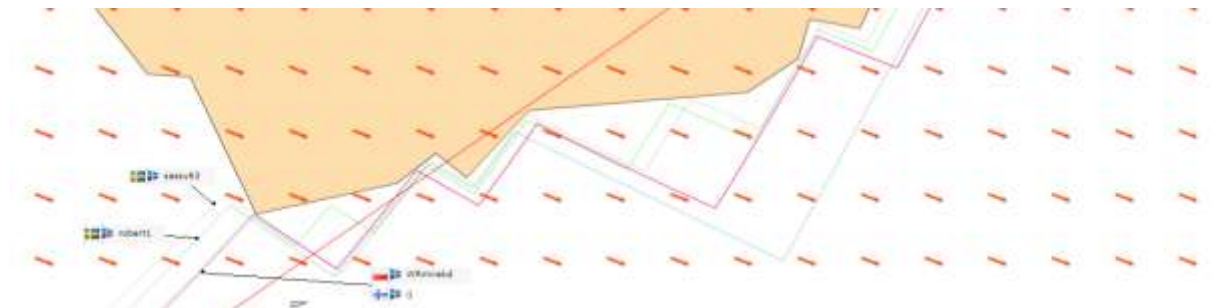


After passing the Looe Island mark, it became important to choose the place and time to change course to Lizard Point mark.



I devoted a bit of intensive work to it, and although the route chosen by **ij** and **Mouthansar** was delicious, my calculations indicated earlier turn even at the cost of having to tack on the approach to Lizard Point. **Sassy63** made a similar decision and we both took the lead.

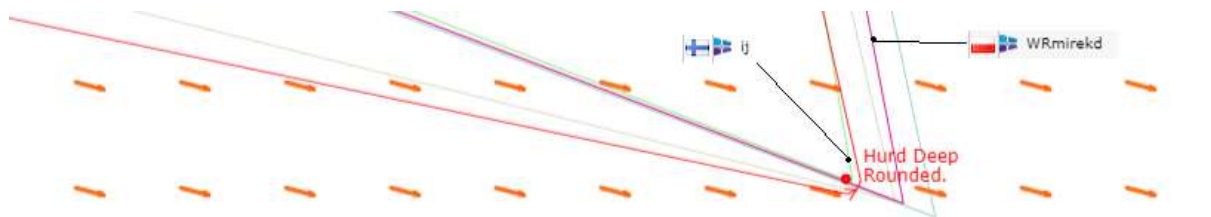
The road to Newlyn mark did not bring any significant changes but see what happened on the last turn to straight to Wolff Rock.



**Sassy63** and **Robert1** delayed the turn to Wolff Rock and therefore had a better TWA and faster approach speed. It gave **Sassy63** the lead, great. However, I remembered this manoeuvre, but more on that later. The joy of the Swedes did not last long, however, because they took the wrong path after passing Wolff Rock and on the next Hurd Deep mark, practically fell out of the game.

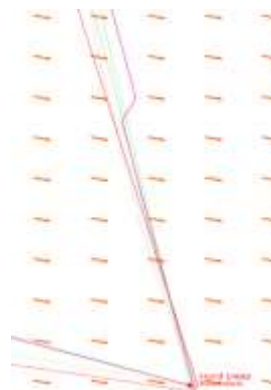


The return on Hurd Deep, according to my fears, did not go very well, but I still kept a slight advantage over the rest of the stake.



It was very important here to keep the altitude so as to have the best TWA on the approach to the next mark. **ij** as you can see made the turn perfectly.

He also predicted that on this part of the race I would have a heart attack. I sailed without qtVlm and my DC was 100% empty. I was just planning my way after passing the Brixham mark. Something has happened that I can't explain and I don't know exactly how it happened. Suddenly I changed my course twice. Of course, I lost height and of course performance. **ij** practically caught up with me and had a much better position, it became obvious to me that he would overtake me at





Brixham.

As soon as the heart attack subsided and the appropriate medication in the form of a glass of whiskey was administered, using the **ij** reaction to my strange course changes, maybe you remember, in the chat I asked him how to make such perfect turns?

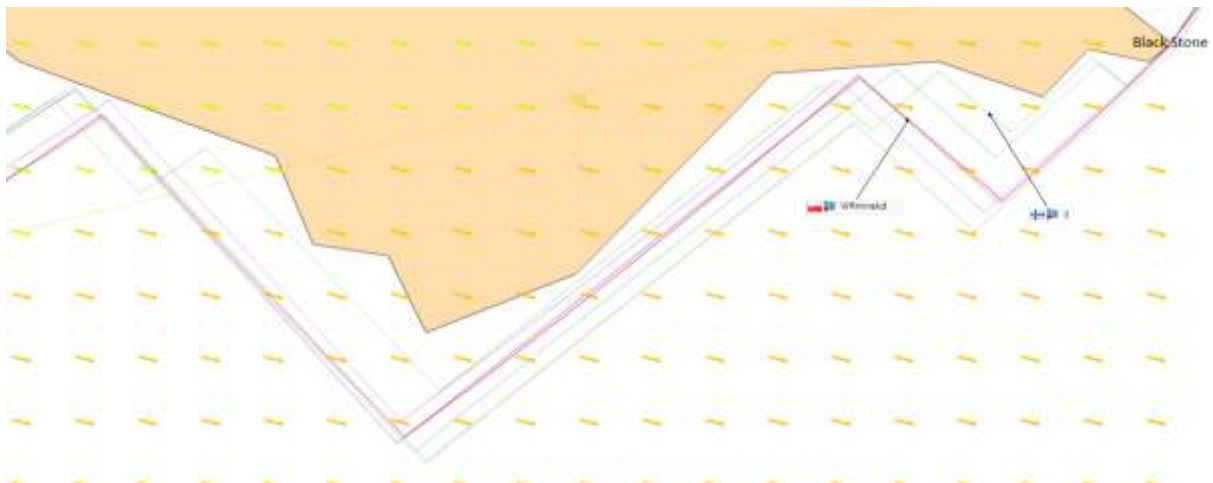
What wonderful advice I read 😊😊😊😊😊😊😊😊

I used them all and see what a beautiful turn I

made on Brixham mark !!!



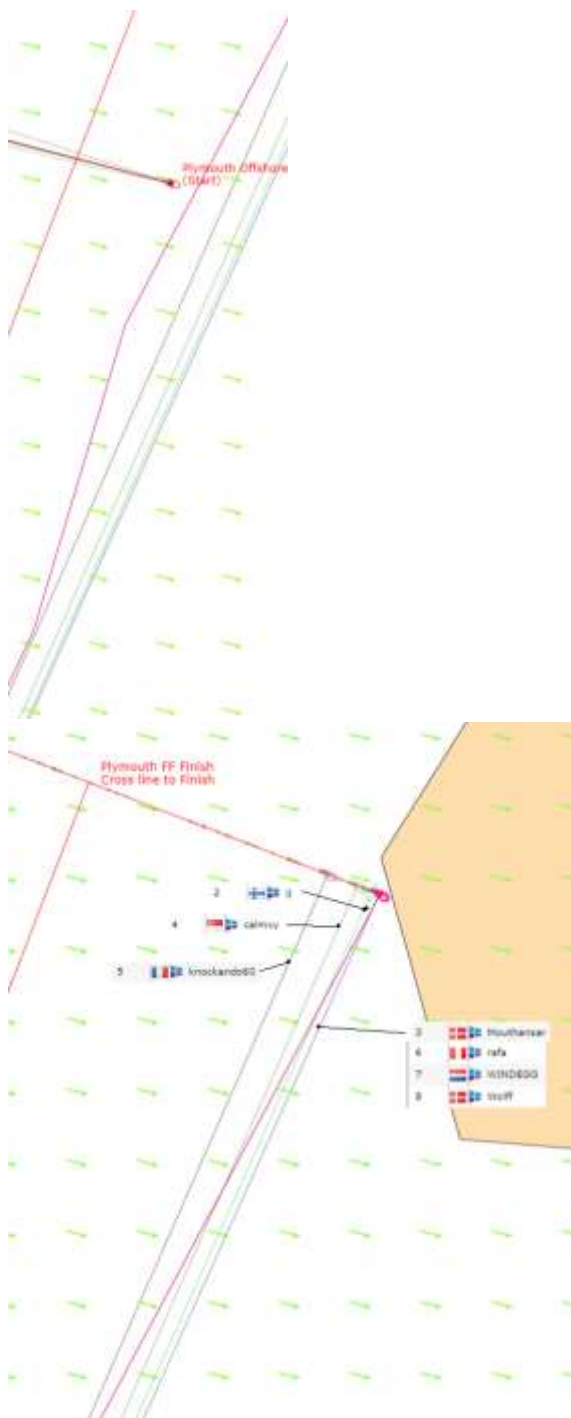
It was possible to make up for the loss to **ij** but still he was minimally in the lead. I was hoping to improve my position after the first turns past Black Stone. **ij** tacked and I bet on minimal turns. However, this did not bring the expected results and I realized that winning with **ij** is practically impossible.



I have already accepted the loss properly. I planned a further route almost in the style of **Go4iT**. At a safe distance from the shore not to catch a BBQ and went to sleep.

Only a tiny spark of hope remained. Do you remember what I wrote about **Sassy63** on the approach to Wolff Rock? Here, on the approach to the last Eddystone Lighthouse mark, the situation was almost identical. I had nothing to lose and delayed the turn. I completely didn't expect that **ij** overlook it.





For me, it was an amazing race and I thank you to all for it.

Warm greetings,

WRmirekd