

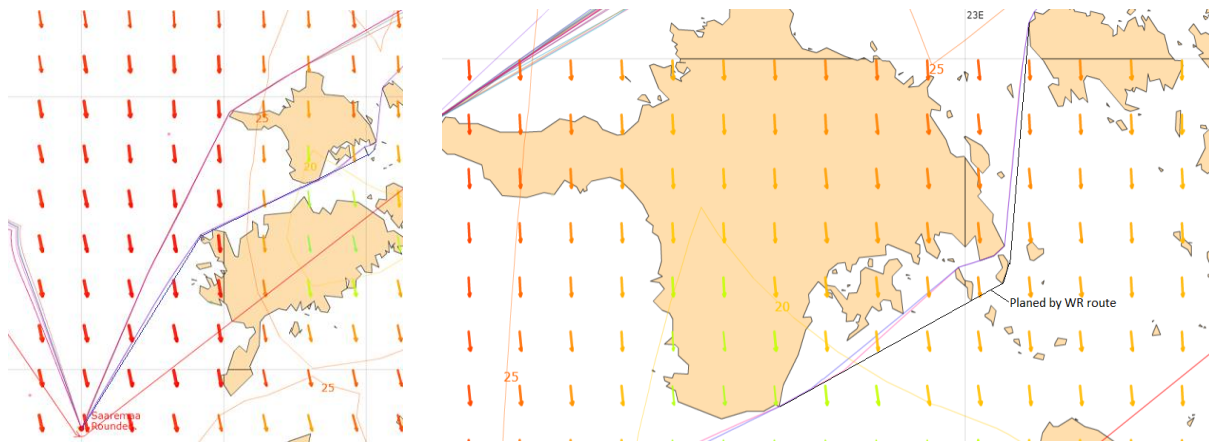


I don't remember which position I was in but probably somewhere in the lead. By the way, I would like to know how the start ranking is determined? I always start from some very distant position.

When I was training fencing, the ranking was based on places I took in previous tournaments. This determined the placement in the elimination groups. I know it doesn't matter in this situation, but it looks a bit bad. It is as if Hamilton in F1 would start from the last position.

I have to admit that I was getting ready for this race, as you know by reading my previous report.

Even before the start, qtVlm router showed the north route. However, I checked other options. I manually planed the route as below.



The calculations showed a loss of about 2 minutes at the south crossing. However, it was a very tempting proposition due to the change in WX, which could give benefits. The route was not obvious what was confirmed later.

Winning is also about being able to take risks and choose a non-obvious route.

If you take a chance and win, you'll be in glory, but if you lose, they'll hang you like a dog. This is the price we pay for leadership.

Immediately after passing Saaremaa mark, became obvious to me that "ij" chose the passage between the islands (south route).

It was interesting to observe the behavior of the other crews. Some were undecided and waited for what I really didn't know. No decision.

As a leader, you have to make decisions. Good or bad. Better good. But you have to.

The exchange of information between "ij" and "WRmirekd" caused quite a stir. On the one hand, "ij" admitted that he was not sure of his choice and on the other hand I said it was too late to change my course so I choose north. We both made some choices.

My calculations showed a 1-2 minute advantage over "ij". Probably we were both wondering what the new WX will bring.

Most of the armada followed me north. "ij" and "bonknhoot" between the islands.

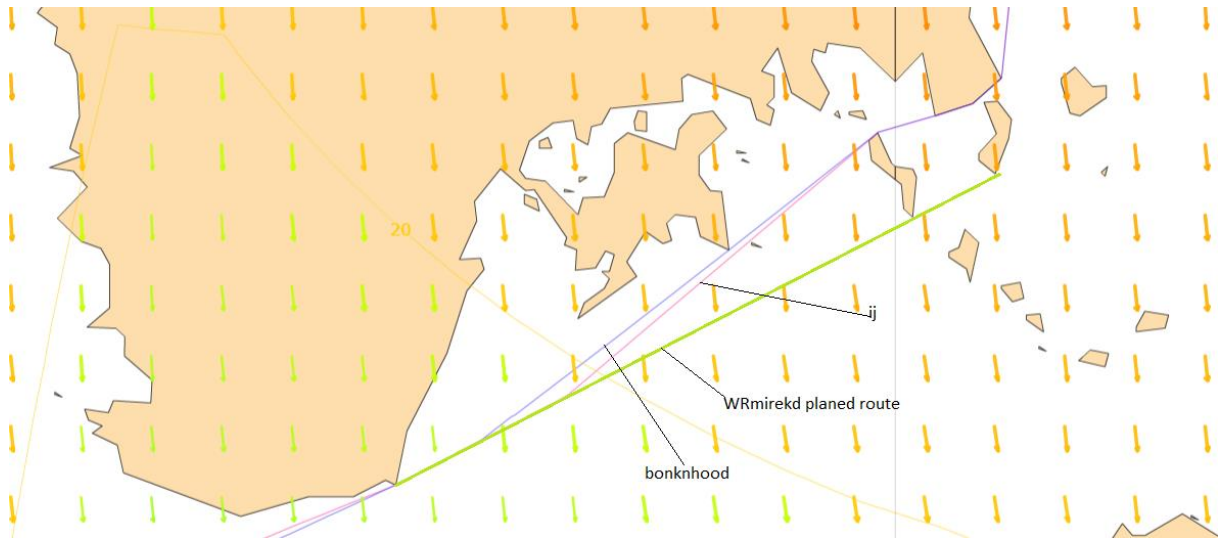
Everyone chose alone.

On the northern road, I had to control and recount my friends actions all the time. Wolff, DIKKEHENK, knockando60 didn't make my life easier.

On the south road "ij" and "bonknhoot" are outside of my control. But at the moment I thought they were behind me.

See what happened!!!!!!!!!!!!!!!!!!!!!!!!!!!!!!!!!!!!!!!!!!!!!!!!!!!!!!!!!!!!!!!!!!!!!!!!!!!!

Green is my previously checked route.



It's my mistake. Without checking, I assumed that the additional slalom between the islands would only worsen the result and based my forecasts on the original calculations. Additionally, my vigilance put "ij" to sleep with his chat commentary.

Looking at the routes, it seems to me that the situation was saved by "bonknhoot". If we have the "ij" and "bonknhoot" reports, we'll find out the truth.

It seems to me that "bonknhoot" first discovered that the transition between the islands will give an additional bonus.

Immediately after his change of course, I counted everything and the hair bristled on my head.

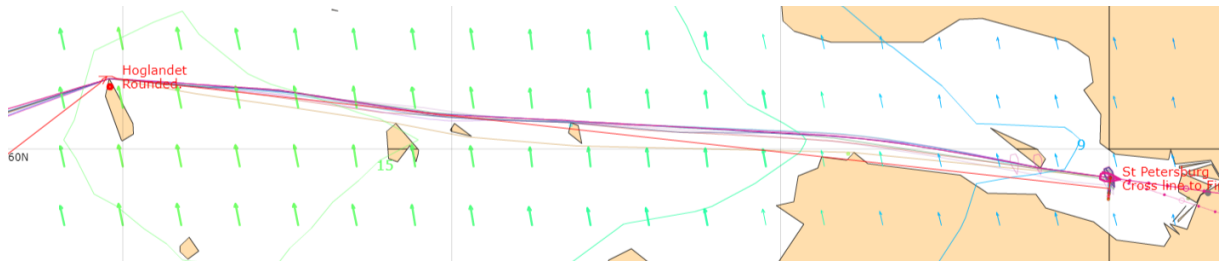
The new road showed 3 -5 minutes advantage !!!!!!!!!!!!! It seems that "ij" also recalculated the route and changed course.

Goodbye podium.

It became obvious that "ij" and "bonknhoot" will take first places on the podium. All that's left is to count on some wonderful WX change. However, this was not expected.

As you can see quite early I was aware of the order at the finish. It remained only to stay in the lead in the northern group.

My colleagues didn't make it easy for me, furiously attacking leeward and windward.



In practice, the ranking was fixed on the Hoglandet mark.

IJ, BONKNHOOT, (...), WOLFF.



Far yet?????

Greetings,

WRmirekd/November 2019