

Antwerp to Belfast 2019 race report.

I'm starting to write this report before the race is finally finished.

A lot of surprises is prepared for the participants, but it has to be silent now.

Anyway, before this report appears, everything will be clear.

But let's start from the beginning.

As you probably noticed "ij" is amazing. The last races are concentrating my attention on the fight with him. The "Baltic 500" race was lost but on the other hand, it was not good to win it.

This race "Antwerp to Belfast 2019" I decided to win. Well, it's easy to say, but it's harder to do. The presence of "ij" on the starting list encouraged me to work even more.

It was primarily with him that I wanted to win without regard to the place. Just before "ij". He is perfect, as you read our chat posts, you know that he takes into account even 3 gradual TWD differences when planning a route. How do you convert 3 TWD degrees at the expense of 0.1 knots of speed on your route? "lj" will explain it to you 😊.

Theoretically, I know all this. I am a trained experimental physicist and I have always been closer to practice and experience than to pure theory, although of course, I can not escape from it.

As a joke, I do not know if I will translate well into English.

When are we dealing with theory?

As we know all and nothing works.

When is the practice?

It works, and no one knows why.

And now the combination of theory and practice:

Nothing works and no one knows why.

May it never happen in IRL 😊 😊.

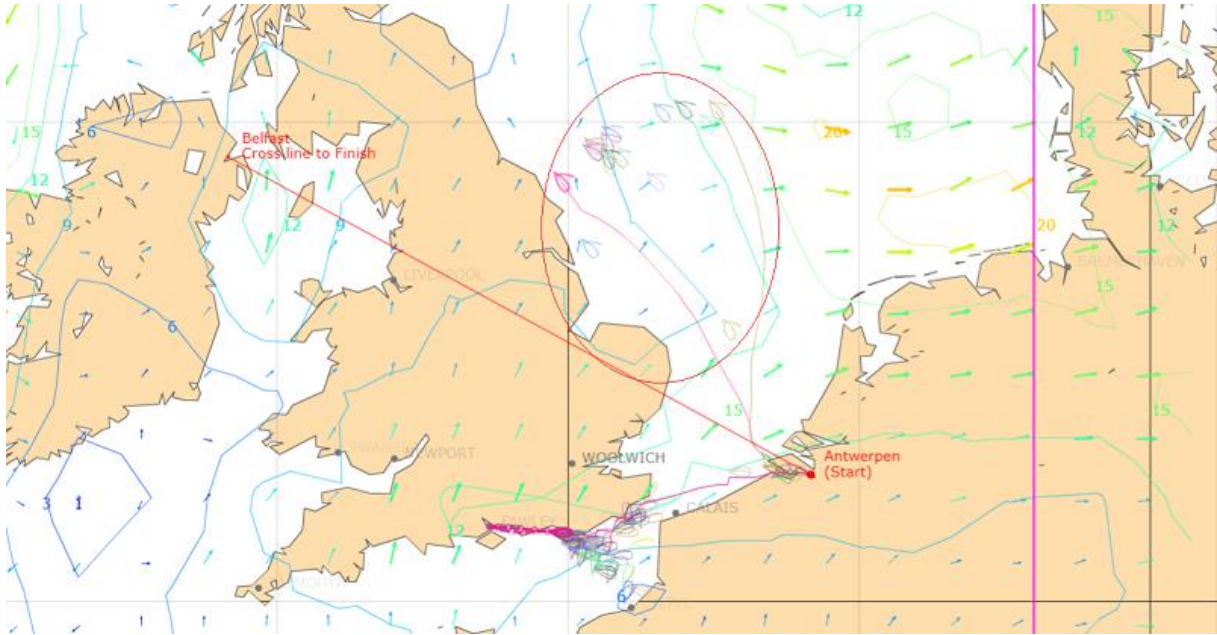
First question.

The northern road through Scotland or the south?

Distance: Quick check for example in "Google Earth" about 300 - 400Nm more through Scotland. The calculation for the total distance and speed from the "polar" chart disqualified this route. Although in one calculation there was a difference of only 3 hours. The unexpected change in the WX could only favor this path. Analysis of the weather conditions in this region, it definitely indicated the choice of a route through the English Channel (LaManche) or southern road as I called it.

The exit from Antwerp gave practically no room for maneuver. Precise manual navigation from point to point up to the channel. The difference to "ij" was within $\pm 50\text{m}$. That is in fact, the thickness of the paint on the hull.

18 daredevils chose the way north.

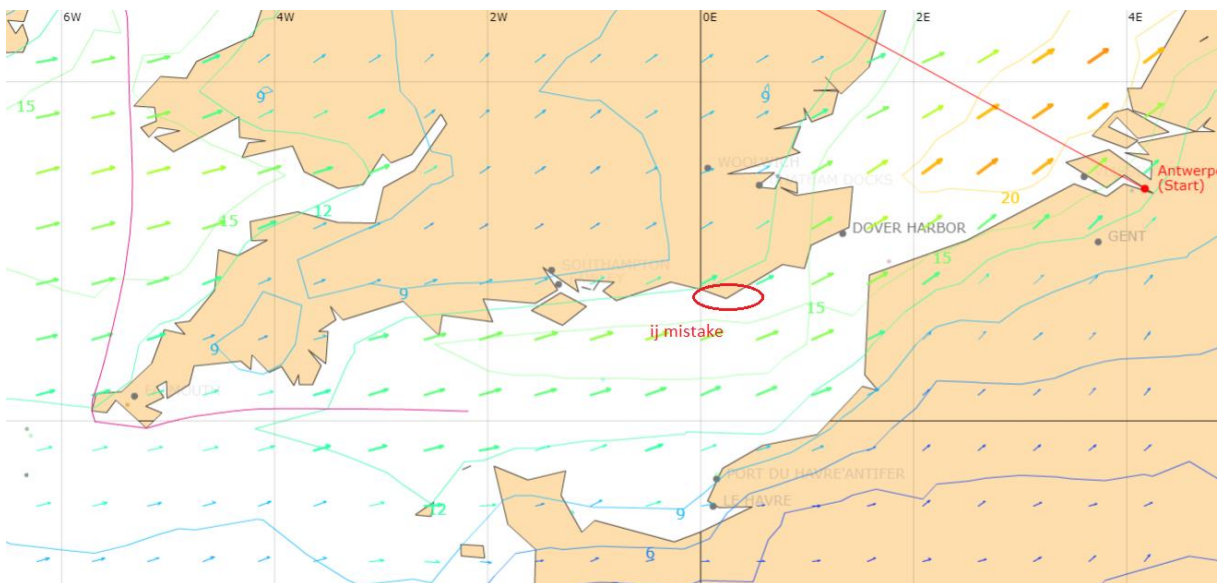


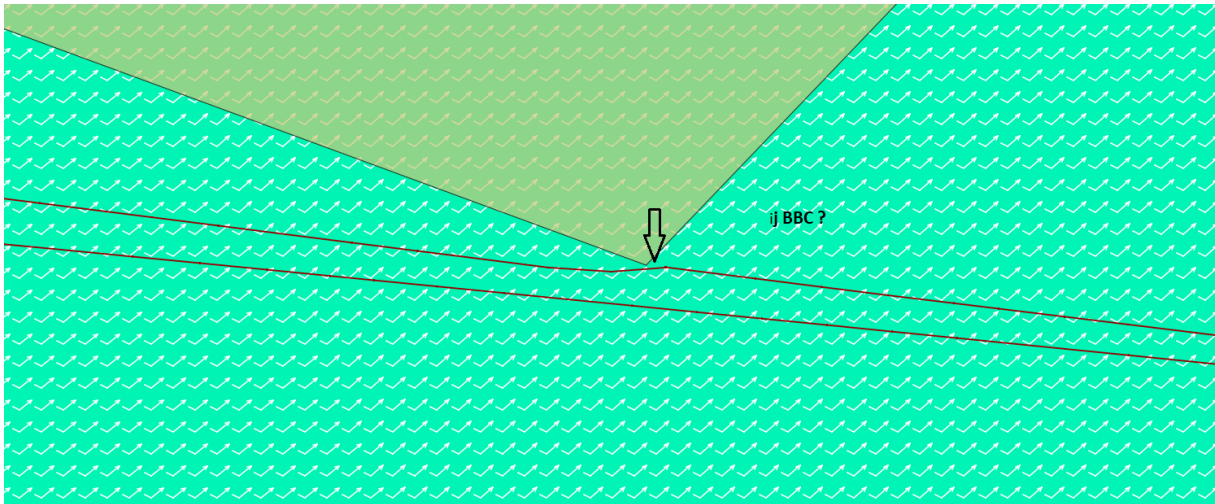
Second question.

How to win?

It's easy, you have to cross the finish line, as a leader.

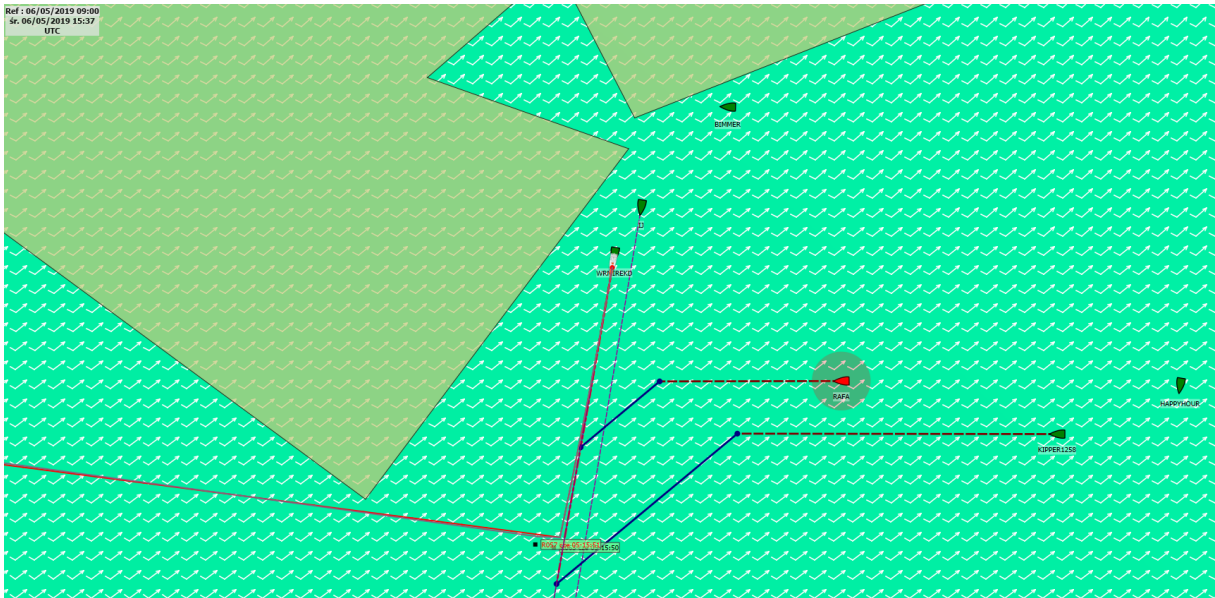
Use the opponents' mistakes. And it happened this time, and very early on. This is not cool, because now you have to watch and no reference. Like a pioneer, you set a route. This is not an easy task.





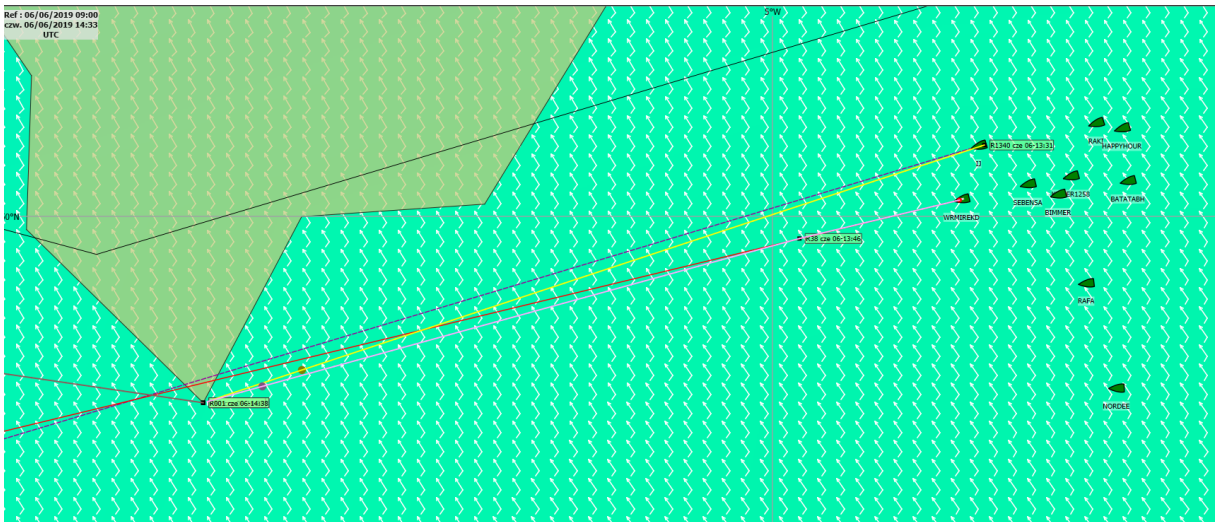
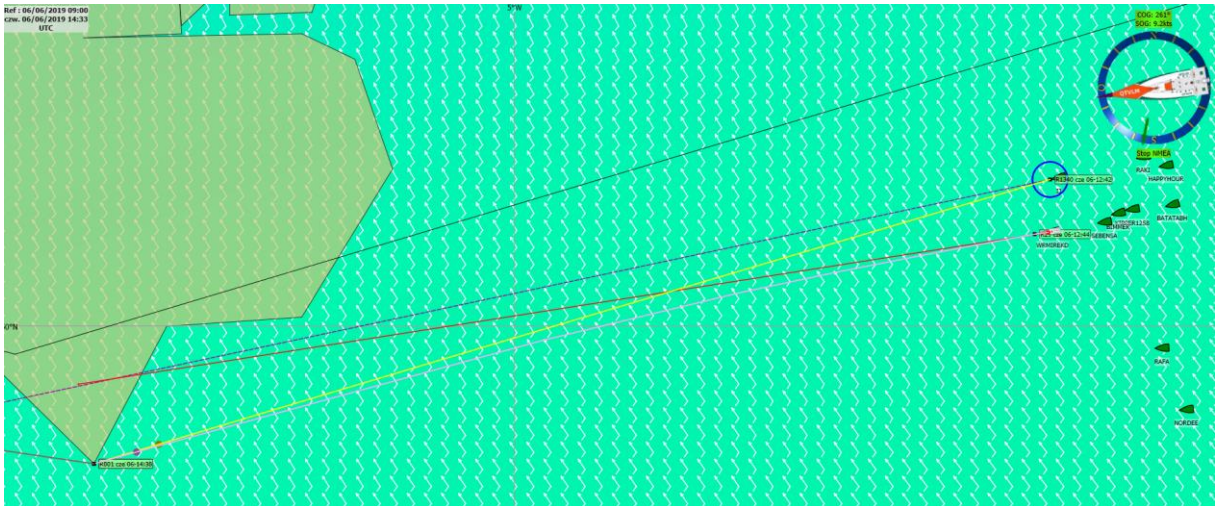
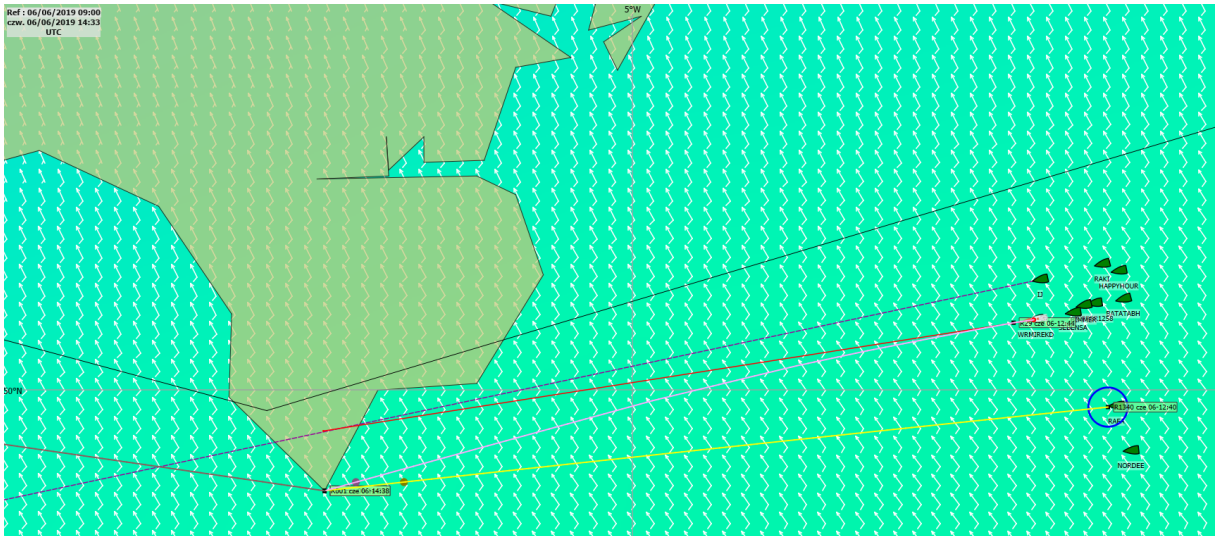
This error definitively deprived "Ij" victories and gave me an advantage of around 0.3Nm which I managed to bring to the finish line.

After this unfortunate maneuver the situation in the southern group looked as follows.

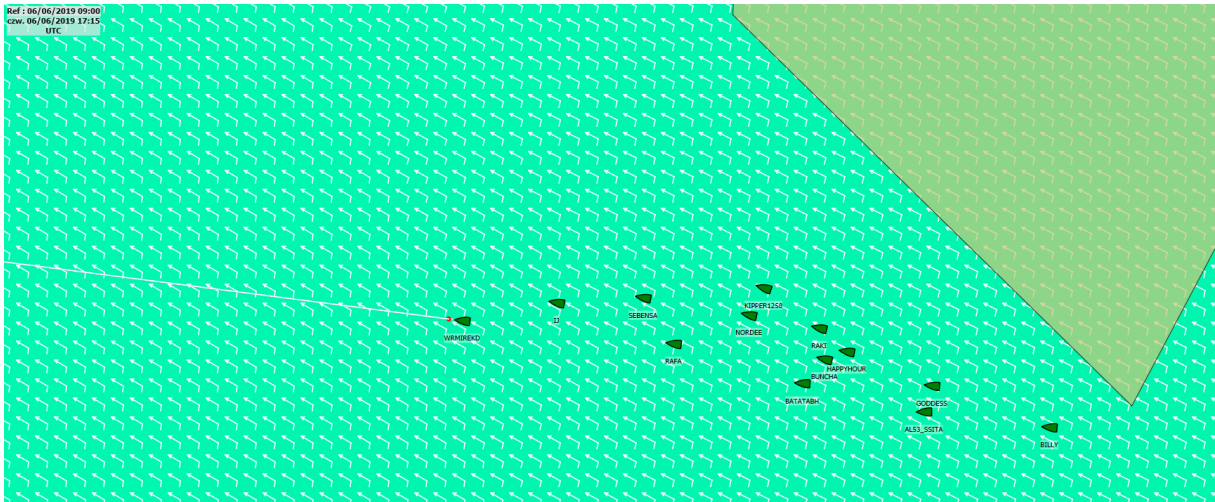


Focused on "ij" I have now checked other great players: Rafa, Bimmer, Kipper. Not once Kipper suddenly, in a known only for his way, from a lost position, went to the leader. On the other hand, having an opponent like "ij" you can be sure that he also controls the other 😊

Below you have next images of the situation. I created additional routing for other objects in QtVLM. On this basis, I can check how the program calculates the route from my position and from the position of the opponent. Such a comparison. The effects can be seen in the next images.



And confirmation of the position a few moments later.



Finally, on the straight line to the finish line. After clean water without surprises.

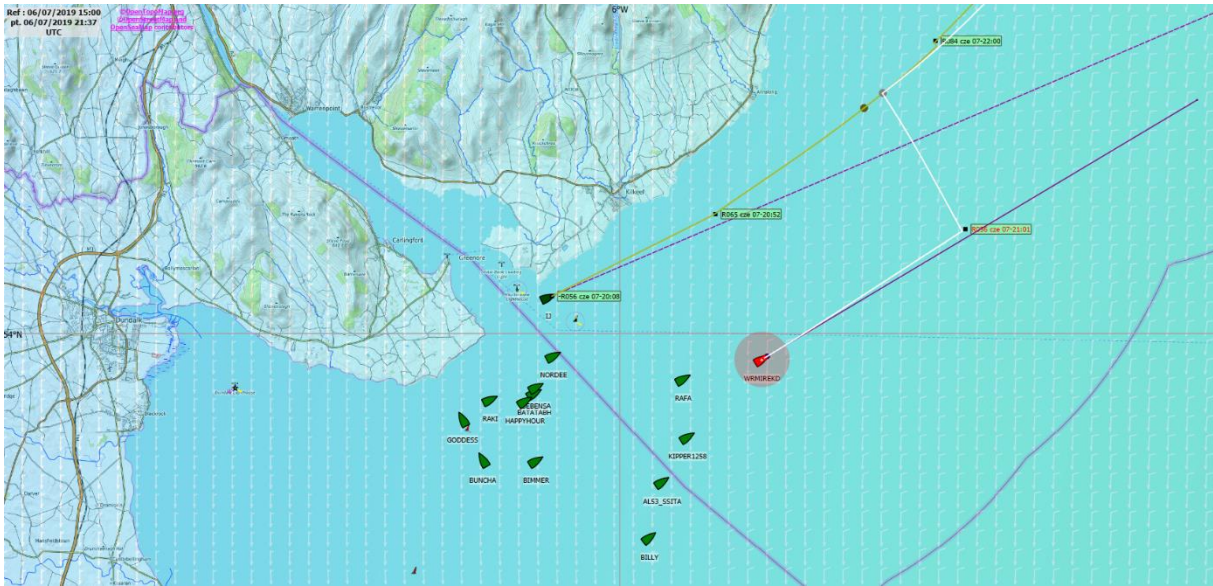


I let myself sleep and not specifically deal with WX changes which resulted in anxiety the next day.



It looked quite serious. The next simulations calmed me down a bit, but my advantage returned to the magical 0.3Nm again.

The last strategic change of courses. My mind told me to stick to his plan. "IJ" went max to the north but I risked an additional return.





Then, Next, it was already straight. From point to point.
It would be interesting to read the report "ij". Maybe he will write and explain his strategy.
I greet everyone, especially the northern group,
WRMirekd

PS.
What is this?





I am not "Capitan Willy" (Careka dog)

What is this?

Correct answer in the next report if I can win something!



All tails on the deck !!!