

## The Vineyard Race 2017

The Stamford Yacht Club welcomes Sailonline to its 2017 running of The Vineyard Race. The course runs from Stamford to Buzzard's Bay Light near Martha's Vineyard Island and back again, leaving Block Island to starboard. Sail against the real fleet in your Santa Cruz 52 (SOL Race #1080), said the race presentation, one to be started 17:00 hrs UTC, 01th September.

On the **Stamford Yacht Club** website there is a brilliant quote from Oliver Wendell Holmes, Jr. reproduced here:

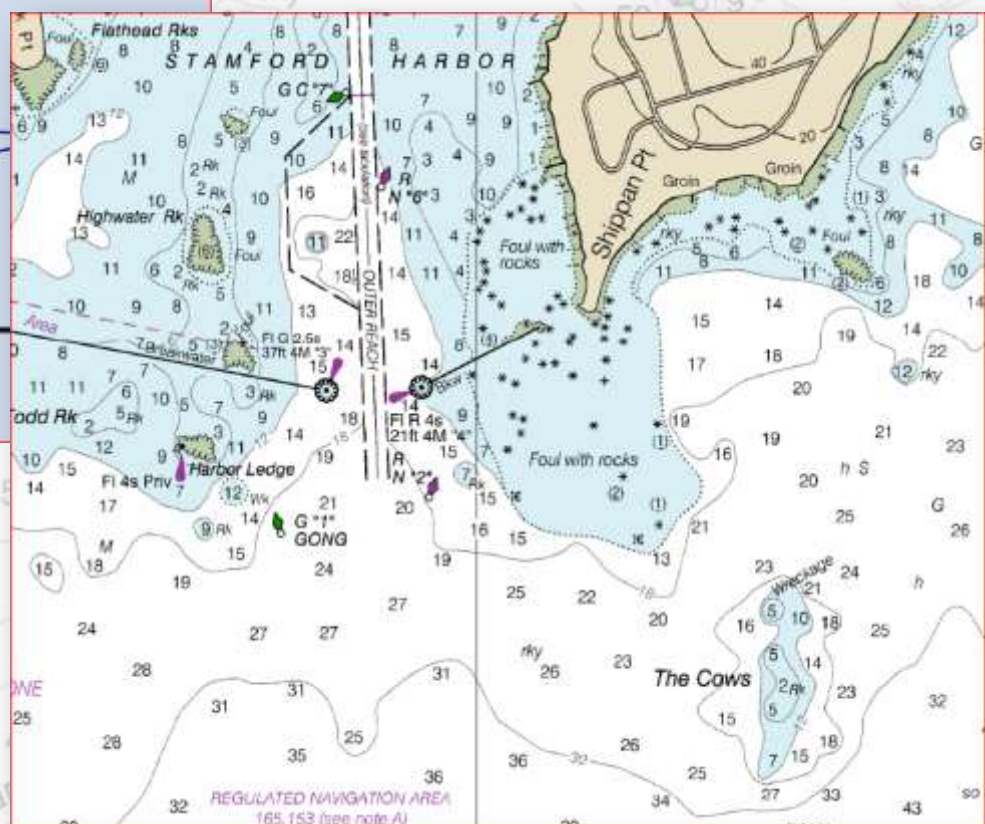
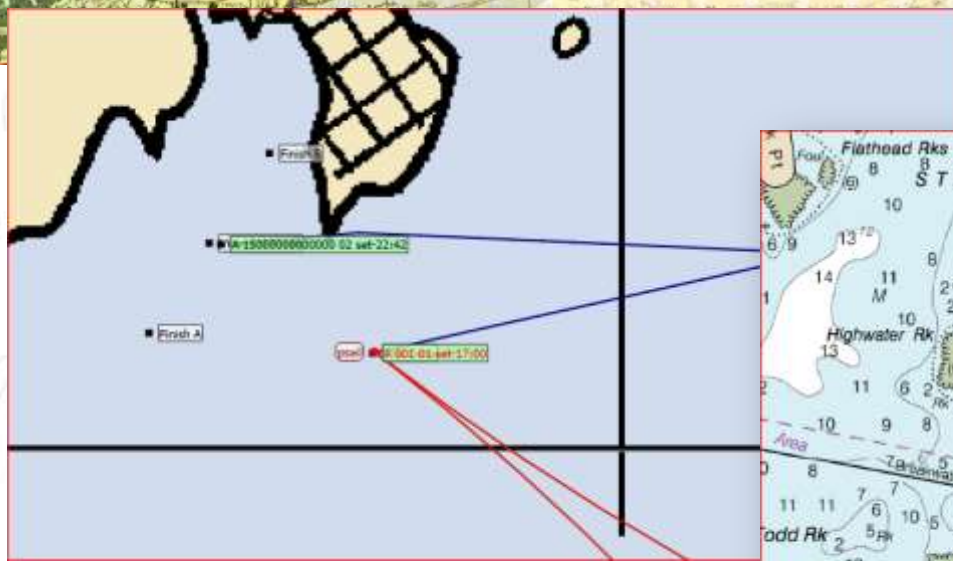
"I find the great thing in this world is not so much where we stand, as in what direction we are moving. We must sail sometimes with the wind and sometimes against it. But we must sail, and not drift, nor lie at anchor."

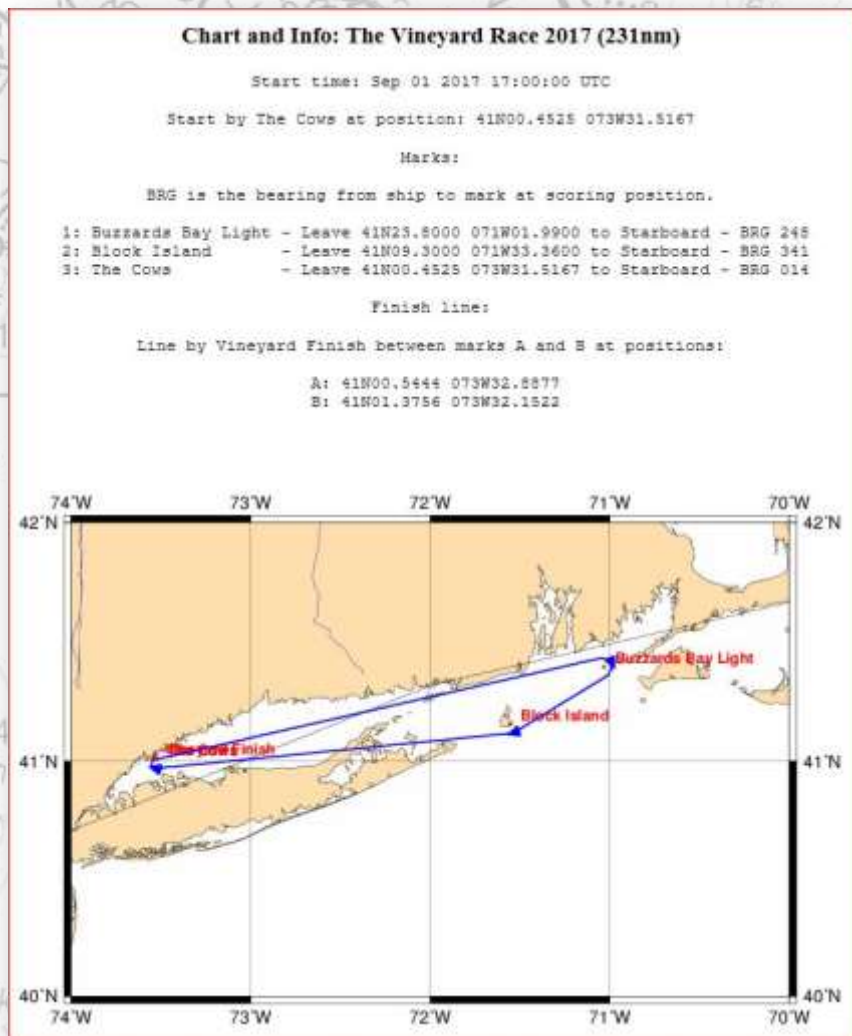
So, my first congratulations go to all the sailors, RL or SOLers that *lifted the iron* and sailed this race, one that is already well established as a SOL classic racing venue, and every year getting better.

Thank you SOL and Stamford Yacht Club initiatives.

## NOR...without preps, race without frontiers.

In spite of the NOR explicitly mention that, before going to the Finish Line (FL), you had to round the *Cows Race Mark*, while sailing a few miles from the finish I had my moment of doubt. At the time I even asked in the Race Chat for someone to give me a confirmation on the right rounding procedure for the final approach, to which both *Rhino* and *Mouthansar* Skippers gave me help. Again, my appreciations to them.





A short explanation for my (un)reasonable doubt.

It all started in the first routing I've made, less than 1/2 hr before the race start. This time no race preps and one of the consequences was to lay (by hand) the Leg 2 routed path for the FL, touching the South tip of *Shippant Point*, without going first to the Cows.

A couple of hours before the finish I had to use the SOL phone App. When the doubt came I opened the NOR in the phone but the graphical information was not very clear on the tiny screen.

Anyhow, in good justice the NOR was clear:

- 1: Buzzards Bay Light - Leave 41N23.8000 071W01.9900 to Starboard - BRG 248.
- 2: Block Island - Leave 41N09.3000 071W33.3600 to Starboard - BRG 341.
- 3: The Cows - Leave 41N00.4525 073W31.5167 to Starboard - BRG 014.

Later, from a question by *Rhino Skipper* about possible changes in the Android Map App, came the poetic answer from *Mouthansar Skipper*:

"There once was a sailor on Android  
Who questioned his take on Sigmund Freud  
He said: "I'm going nuts.  
Shoreline's all in the ruts  
That's what I ... am trying to a-void."

At the time I was sitting on a nice coach but, no *Sigmund* around taking notes.

### Weather, routings and race

For the Vineyard 2017, in good hour SOL opted to use GRIBs extracted from the **WRF Weather model**. Hats off to SRC and OPS for this choice!

Believe, it is totally different to have this kind of GRIB files other than the usual from the GFS Weather Model. It gives you not only a very close reality to the RL place but also a much fine sailing and tactical options. Whenever it's possible, please, bring it.

For all the race, I've made just five routings, being the first finished only 5 minutes before the start time (note: hours in PT are UTC+1 hr this time of the year), where the first routing was sailed till the second day morning, and the other four till the end of the race, being two of them *re-routings on the way*.

Name	Date modified	Type	Size
Vineyard 01, 01.09.2017.csv	01-09-2017 17:55	Microsoft Excel C...	320 KB
Vineyard 02, 02.09.2017.csv	02-09-2017 09:13	Microsoft Excel C...	151 KB
Vineyard 03, 02.09.2017.csv	02-09-2017 11:40	Microsoft Excel C...	131 KB
Vineyard 04, 02.09.2017.csv	02-09-2017 16:24	Microsoft Excel C...	80 KB
Vineyard 05, 02.09.2017.csv	02-09-2017 17:42	Microsoft Excel C...	64 KB
Vineyard 06, 02.09.2017.csv	02-09-2017 18:34	Microsoft Excel C...	55 KB

Dividing the race in two Legs, I've crunched for the first one - **Cows to Buzzard** - the relevant data in the following table:

	TWS	TWD	AWA	AWS	[TWA]	BS	SOG	COG	DNM	CNM	VMC	VMG	VMC ÷ BS
Max. =	14,03	345,11	91,02	15,40	135,99	10,34	10,34	88,33	8,06	88,33	10,306	1,873	100,00%
min. =	6,68	306,76	0,00	7,36	78,18	7,76	7,76	61,30	0,02	61,30	7,760	-6,831	96,05%
Average =	11,60	317,80	71,04	10,56	120,35	9,33	9,33	78,15	1,84	78,15	9,286	-4,592	99,53%

The calculated values for the predicted VMC / BS ratios (note: in SOL, "BS" = "SOG") were very good, meaning the routed path was going to take the best possible profit from the Wind offered by the WRFGRIB. I didn't made the night shift (zzzzzh, as usual) but, comparing the real time arrival hour at Buzzard's with the routed one, I conclude the following two WF's (22:30 hrs and 04:30 hrs UTC next morning) must have been very similar to the first one (16:30 hrs UTC), so, we had in general a great Weather stability for the race which helped us all for reaching race targets at the predicted moments. Also, the difference between the initial routed ETA and the final one was just 8 minutes!

For the second Leg - **Buzzard to Cows** - the corresponding crunched data:

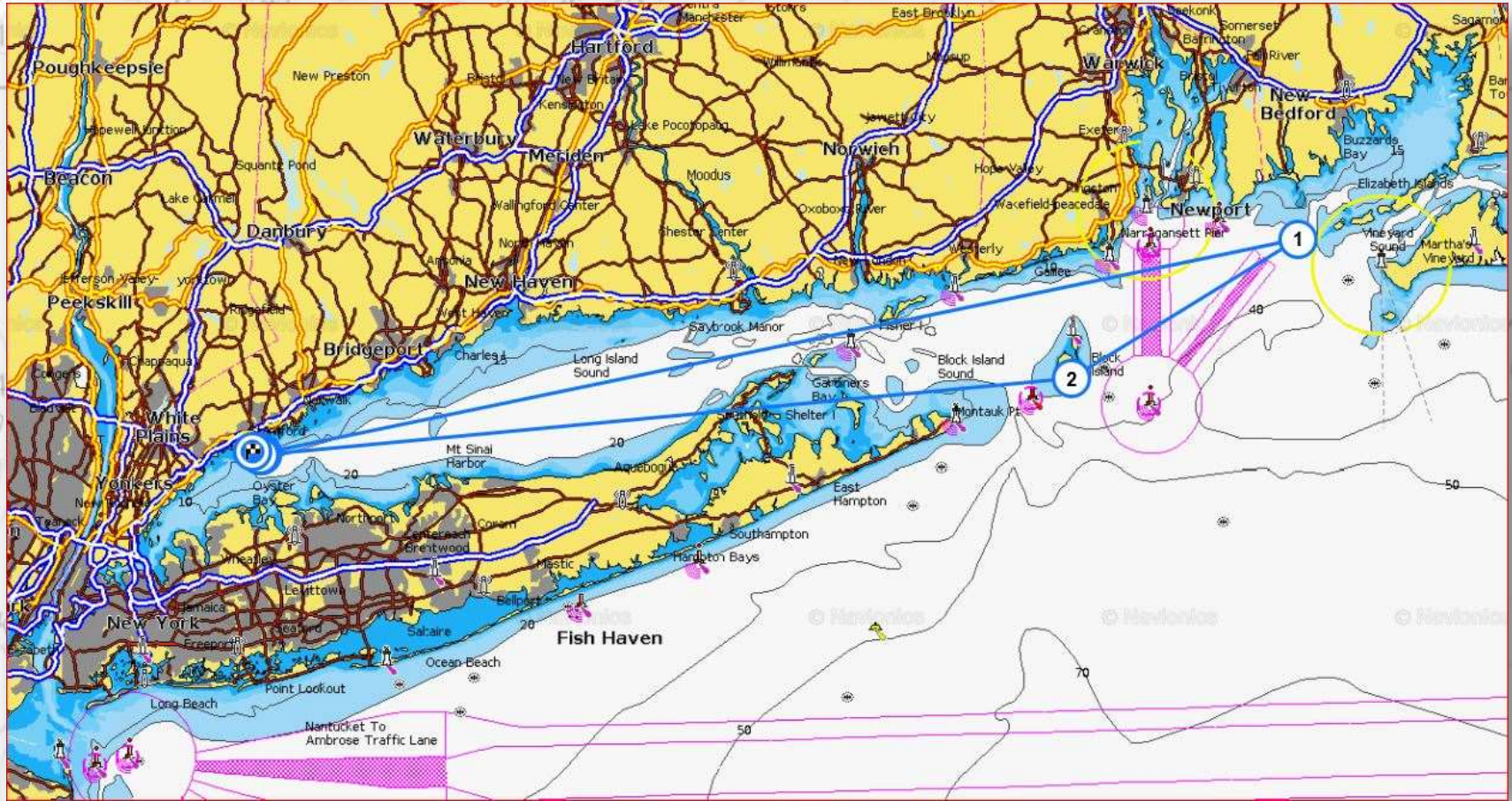
	TWS	TWD	AWA	AWS	[TWA]	BS	SOG	HDG	COG	DNM	CNM	VMC	VMG	VMC ÷ BS
Max. =	10,46	359,99	76,53	12,84	136,20	9,40	9,40	338,76	338,76	12,93	336,85	9,192	0,000	100,00%
min. =	2,02	0,21	-71,46	1,46	94,93	1,80	1,80	228,27	228,27	0,01	228,27	0,291	-5,134	15,10%
Average =	7,15	120,95	0,36	7,88	113,73	7,12	7,12	261,58	261,58	2,95	261,66	6,687	-	92,08%

The decrease on the calculated values for the predicted VMC / BS ratios had to do mainly with a Wind shift expected to start influencing the top fleet even before the second Plum Island crossing.

A lot of the final act was going to be played near the Long Island Sound North Shore.

### Hot spots

In the Vineyard race field we have what I call the "hot spots", i.e., zones near land or rounding Marks where you can go from best to beast in an eyes glimpse.



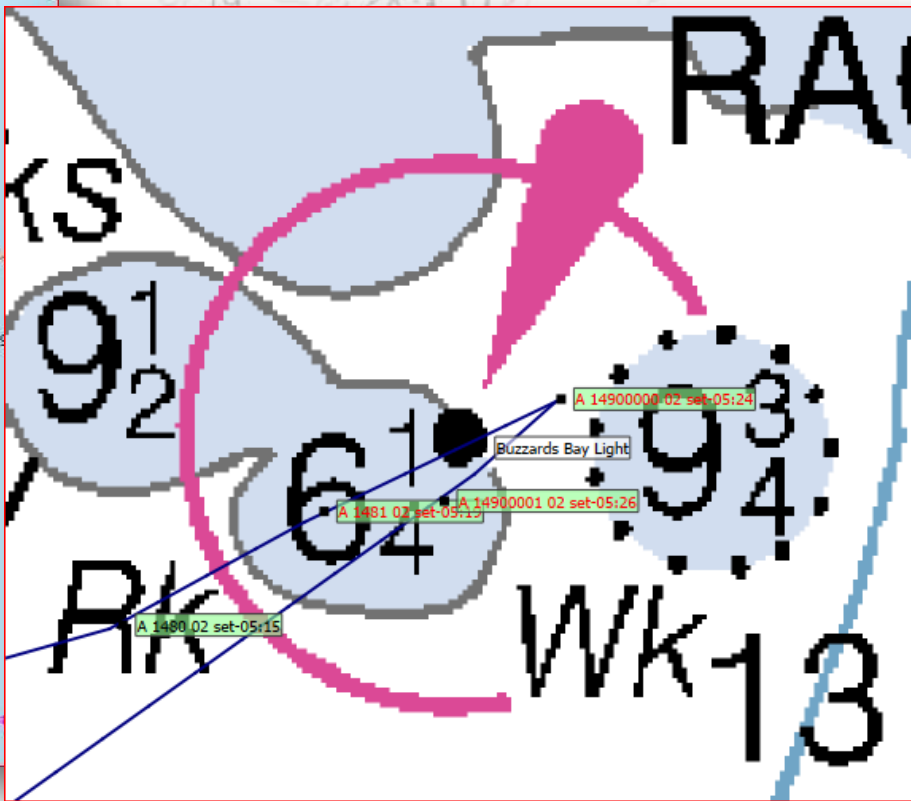
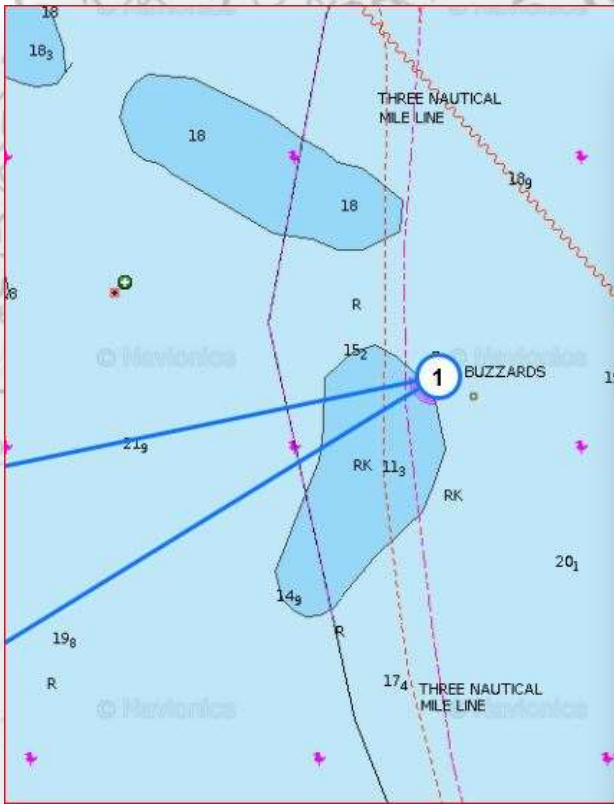
### Plum Island

This is a place where you sail very close to shore on both legs and approximately to the same WPT situated on the upmost North tip of Orient. Passages hours were relatively civilized (23:29 hrs UTC, 02.Sept. on the way up and 11:58 hrs UTC, 02.Sept. coming down) which allowed me to make the right fine adjustments on the helm.



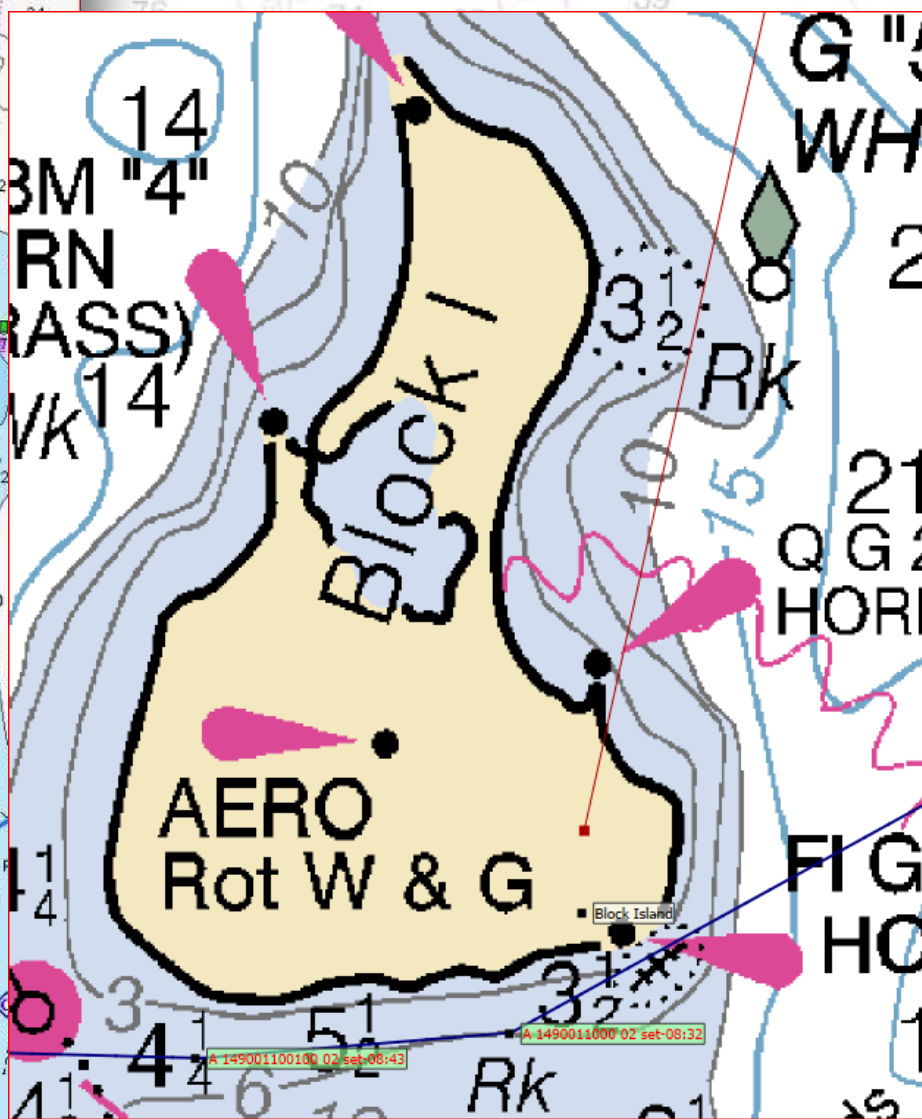
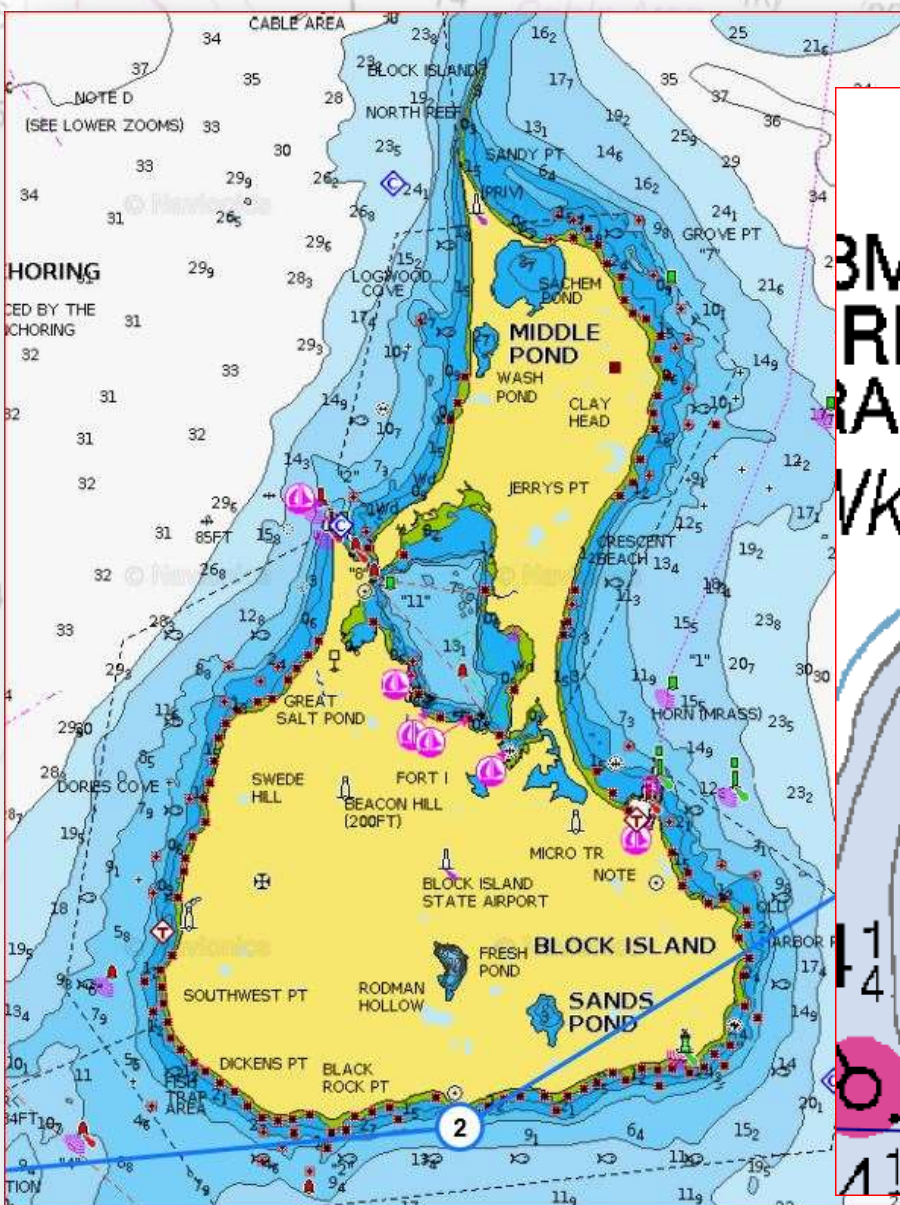
Later, after routing the second Leg the return WPT was shifted to NE, from Orient to the South tip of Plum Island.

**Buzzard's Bay Light**



The Buzzard's Race Mark was predicted to be rounded between 05:19 hrs - 05:24 hrs UTC, 02, Sept. which again permitted to trim *psail's* helm for a safe and quick turn.

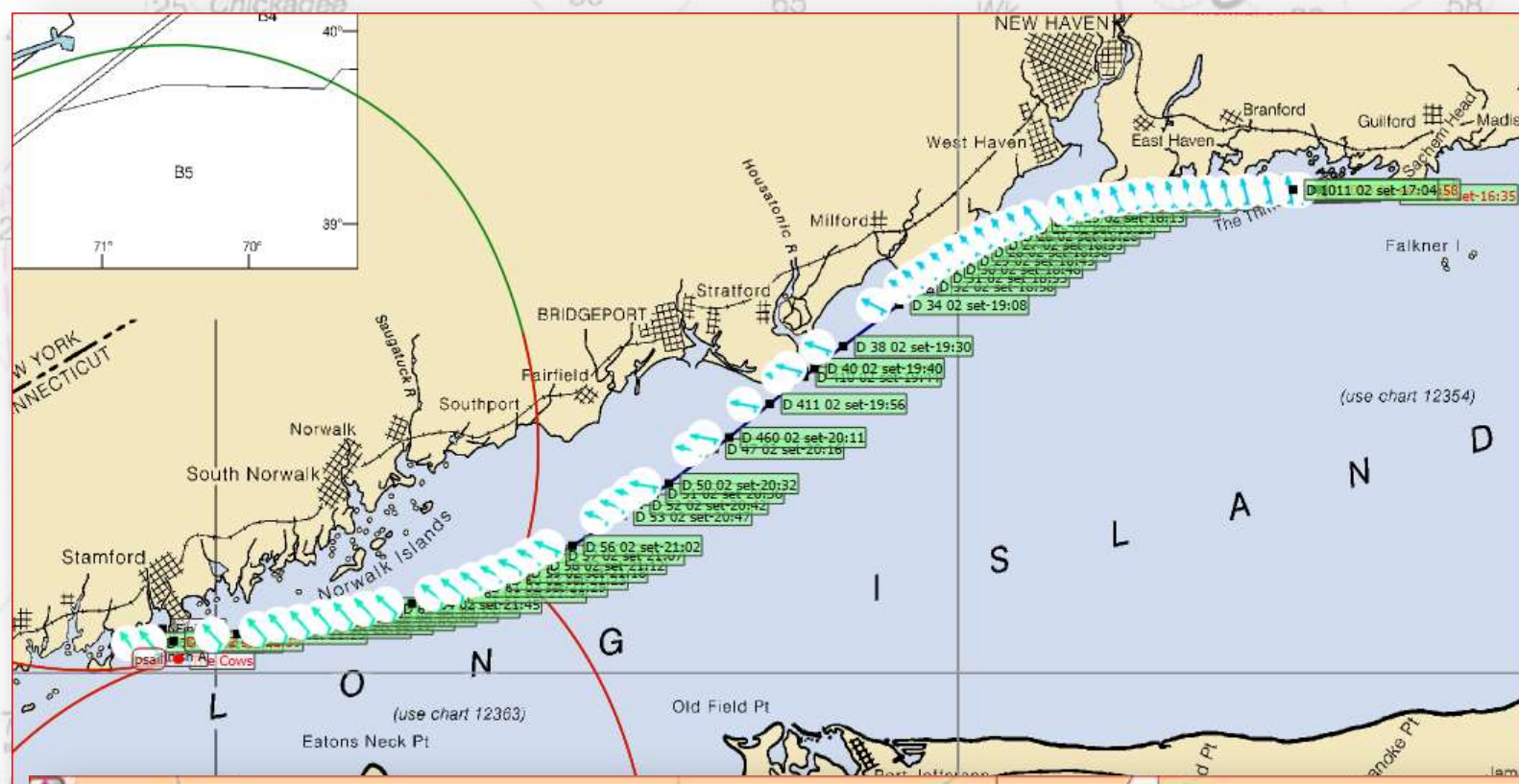
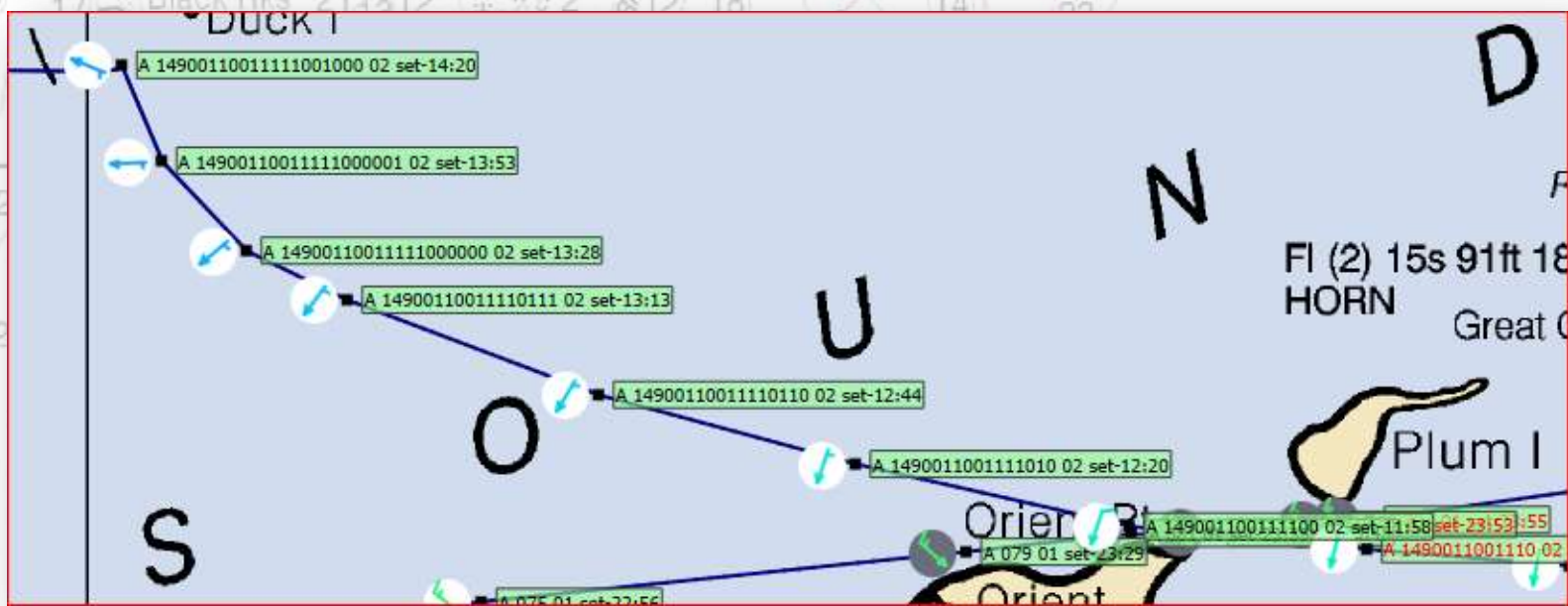
**Block Island**



Solid as a Block but easy to pass in TR mode. Passage hours around Block Island also helped, now with a nice load of the "whatever" caffeine pumping synopsis inside the "CPU".

After Block Island we had two sailing strategies to follow:

- The "hot" one, passing North of Plum Island and more direct to the Long Island Sound North Shore, which was followed by Jan making justice to his bonk'n'hot boat, *LongReacher*, *rafa* and *rumskib*, namely.
- The second one, passing South of Plum Island and curvier in its path to the North Shore, before reaching the rotation mark to West, around 14:20 hrs, 02.Sept.



Being behind the top boats, in firsthand it was useless to follow them, so I went for the second option and hold on it till I reached the right gybing point, near Duck Island. With me was *Alexandria*, *Zoe* and others.

The boats that went sooner for that gybe missed later better angle and WP near the North Shore as the right strategy was to scrub all the North Shore from Hammonasset Point Head till Stratford Point Lighthouse, before a new Wind rotation.

At some point in the "horizontal" I recall Sassy (behind me at the time) going with *bonk* further North in The Thimbles. It was the right move but some opportune sailing counter measures from *psail* cut out latter the good initiative.

From then on till the very finish moment *psail* was well squeezed from *Sassy* on starboard and *LongReacher* on port. I reckon it wasn't easy to sail on the middle especially because at the time I was using only the phone with the SOL Android App.

Anyhow, like in Real Estate, "location" (*fleet position*, to be precise) made the day but, above all, resisting the temptation to start shooting at everything was moving faster around, as in the case of *LongReacher* that went for the last rotation under better TWS/BS and using tighter TWA's but, losing precious tenths of VMC, I'm sure.

I suppose that Jan's lead started early in the morning of the second day, before rounding the *Buzzards Light* Race Mark. *Bonk* marginally lost it during the approach for the "rotation" to Port gybe in Duck Island but after...off she went.

To my mind *bonk* went a bit hot on the final approach to Cows (what do you expect?), being the result a recover from the fleet behind her, but the final outcome was already signed and sealed since Buzzard's from which *bonk* remained untouchable till the very end.

Hats off to another flawless *bonk*'s race that was no less brilliantly resumed by *Moouthan(dpoetry)sar*.

"A Hoot for the *Bonk* is OK  
 Even though at Plum Island he'd stray  
 He led us around  
 Never once went aground  
 In the bays he kept us away."

The final arrival times reveal how close this race was, approximately 10 minutes difference between the top 10. For me good to know the difference between ETA calculated in the very first routing and the final one: 8 minutes (for a RL 238 nm course overall distance).

### Leaderboard for The Vineyard Race 2017

The Vineyard Race 2017, racing with 144 boats.

Rankings: SYC ranking

1-50 51-100 101-150

Rank	Boat Name	Boat Type	DTG DBL	Finish Time (UTC)
1	<i>bonknhoot</i>	Santa Cruz 52	0 0	2017-09-02 22:49:25
2	<i>psail</i>	Santa Cruz 52	0 0	2017-09-02 22:50:33
3	<i>longreacher</i>	Santa Cruz 52	0 0	2017-09-02 22:50:42
4	<i>sassy63</i>	Santa Cruz 52	0 0	2017-09-02 22:51:03
5	<i>Zoe</i>	Santa Cruz 52	0 0	2017-09-02 22:52:05
6	<i>Alexandria</i>	Santa Cruz 52	0 0	2017-09-02 22:52:34
7	<i>rafa</i>	Santa Cruz 52	0 0	2017-09-02 22:53:07
8	<i>knockando60</i>	Santa Cruz 52	0 0	2017-09-02 22:53:19
9	<i>rumskib</i>	Santa Cruz 52	0 0	2017-09-02 22:55:29
10	<i>Hirilonde</i>	Santa Cruz 52	0 0	2017-09-02 23:01:06

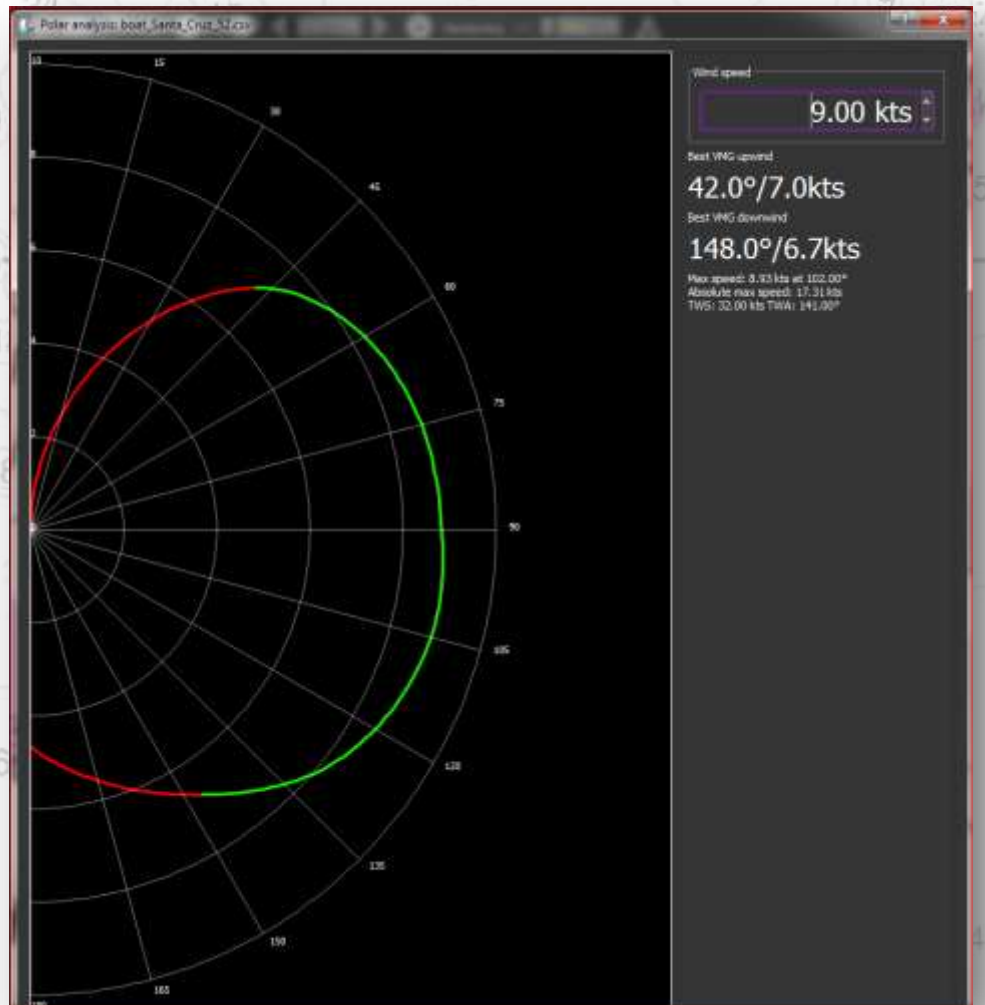
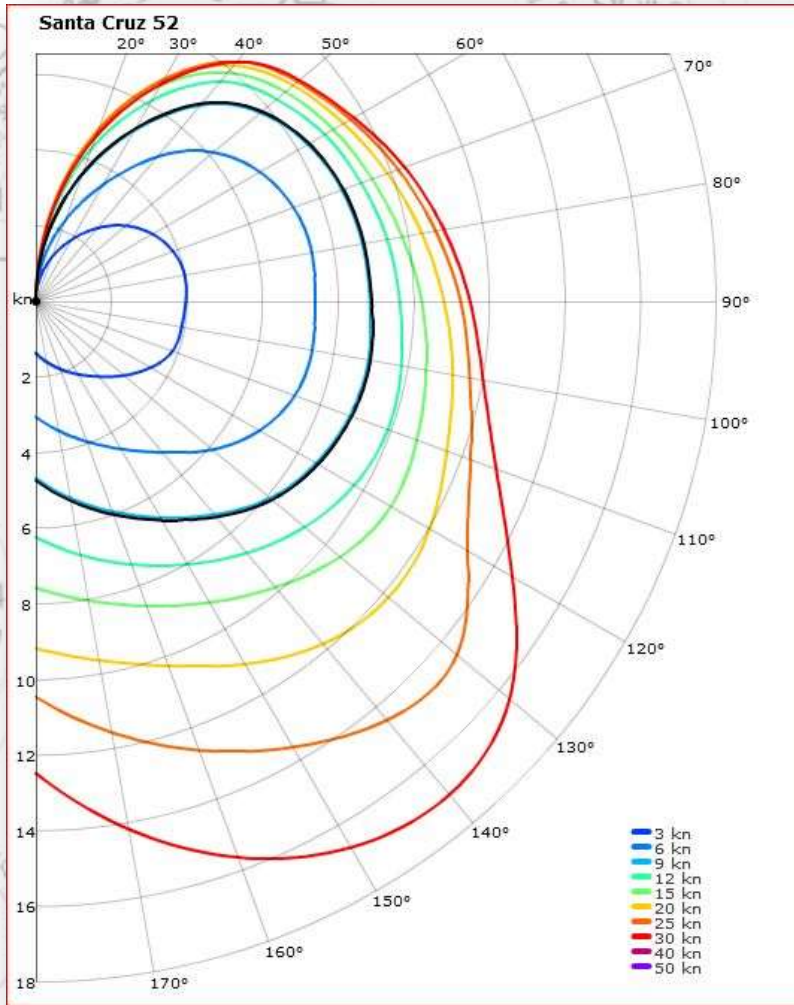
A1		Date					
	A	B	C	D	E	F	G
	Date	Sail/Engine	TWS	TWD	TWA	STW	CTW
82	02-09-2017 22:40	Sail	9.57 kts	146.74°	118.40°	8.84 kts	265.15°
83	02-09-2017 22:41	Sail	9.60 kts	146.76°	118.38°	8.85 kts	265.14°
84	02-09-2017 22:42	Sail	-	-	-	-	-
85							

Comparing the race time for *Magic* (in Class 13 IRC), also a *Santa Cruz 52*, the SOL fleet didn't went bad at all:

*Magic* - 02/Sep/17 - 22:48:55 vs. *bonknhoot* - 02/Sep/17 - 22:49:25.

**Sailed boat**

The Santa Cruz 52 is a 1992 design from Bill Lee, an "oldie" by today's standards but let's not forget this boat was born then as a fast cruiser. And she still is.



The SOL boat Performance Polar is a well "behaved" one - no hoops - very much "rounded" in the beam sailing angles and "squared" for the Downwind, offering a large quantity of TWA options for that particular sailing direction.

For the average race TWS - 9,01 Kts, accordingly to the first routing I've made - the TWA target numbers were:

- VMG, Up at 42,00° with a BS of 7,00 Kts;
- VMG, Down around 148,00° from a BS near 6,70 Kts.

	TWS	GUSTS
Max. =	14,03	0,00
min. =	2,02	-
Average =	9,01	-

From the resume figures we could conclude the race was going to be sailed well above the VMG,Up target values, more on the Down side, something that suited like a glove to *bonkhoot* Skipper sailing style: fast!

**The RL race.**

The Vineyard race was established by the *Stamford Yacht Club* in 1932.

Very professionally organized including a useful Windy Tracker webpage for the fleet and all kind of infos for the RL competitors coming from [yachtscoring.com](https://yachtscoring.com/emenu.cfm?eID=4132) ( <https://yachtscoring.com/emenu.cfm?eID=4132> ).

**VINEYARD RACE 2017**  
STAMFORD YACHT CLUB

Sponsored by: CHELSEA CLOCK, Windy, etc.

Live Feeds: 2017 Vineyard Race - Vineyard Course

Leaderboard

Google Map Player

Elapsed: 1:21:20:03

Wind: now

Course View

**VINEYARD RACE 2017**  
STAMFORD YACHT CLUB  
September 1st - 3rd, 2017

2017 Vineyard Race  
Stamford Yacht Club  
Stamford, CT, USA  
September 01 - 03, 2017

- Online Entry Form / Application - Online Closed
- Current Entry List
- Scratch Sheet
- Crew List
- Starting Sequence
- Cumulative Results
- Team Scoring Results
- Display Screens
- Results in Media Format

SF SailFlow Weather Forecast

- Latest Event News
- Notice of Race
- Sailing Instructions
- Official Notice Board
- IRC Announcements - (No Announcements)
- Documents & Forms (10 Docs)
- Race Committee & Volunteers
- Additional Event Links
- Event Contacts
- Crew/Boat Boards
- General Race Forms

Regatta / Event Web Site  
Stamford Yacht Club  
Select Another Event

Initial Starting Sequence			
<b>Racing Area: Cornfield Point Course</b>			
1	Class 1 PHRF-NS	PHRF_ToT	
1	Class 2 PHRF	PHRF_ToT	
<b>Racing Area: Seaflower Reef Course</b>			
2	Class 3 PHRF-DH	PHRF_ToT	
2	Class 4 PHRF	PHRF_ToT	
<b>Racing Area: Vineyard Course</b>			
3	Class 5 IRC-DH	IRC	
3	Class 6 PHRF-DH	PHRF_ToT	
4	Class 7 PHRF	PHRF_ToT	
5	Class 8 PHRF	PHRF_ToT	
6	Class 9 PHRF	PHRF_ToT	
7	Class 11 IRC	IRC	
7	Class 10 PHRF	PHRF_ToT	
8	Class 12 Multihull	ToT	
9	Class 13 IRC	IRC	
10	Class 14 PHRF	PHRF_ToT	
11	Class 15 IRC	IRC	

Hope one day I'll do it, namely with some SOLers friends.

Cheers all.

João / psail  
03.September.2017



