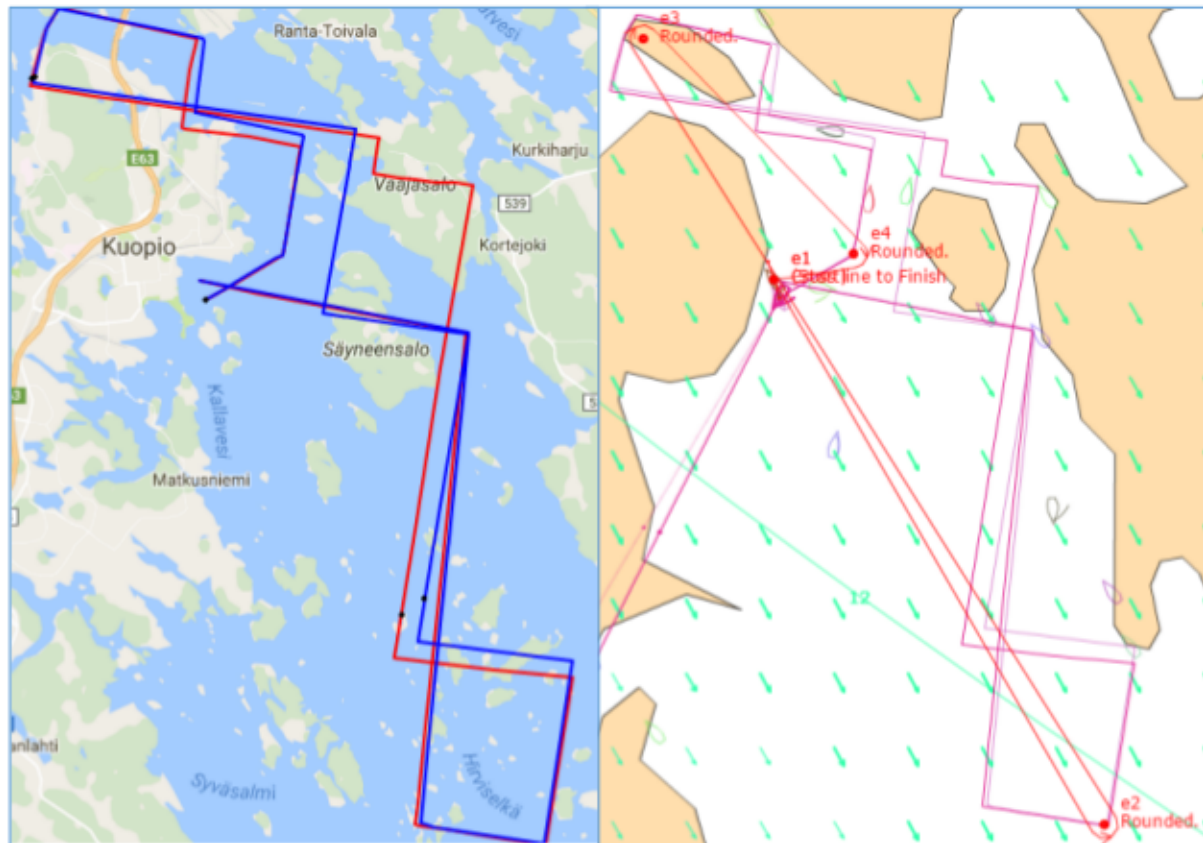


Believe it or not, that was Lake Kallevesi in the middle of Finland we just sprinted round. Even more unbelievably, I won. 5 seconds.

Below you see a trace of bonk (red) and kenza's (blue) tracks on hmm's Log and now in daylight on SOL. Note the slightly different coastlines (!) and that bonk kept inside a sliver of land which could be construed to be Säyneensalo, and kenza didn't.



I think this was the telling difference between us. So why did it happen?

Well, there were two thoughts: 1/ more TWS the further East you kept, 2/ performance loss mitigation.

Now, although you can't really route a race like this and certainly not in the conventional way of generating a set of DCs for importation via brainaid, the router can still be a useful tool, by routing the course segment by segment. The important second segment from e2 to e3 was a beat. My router (QtVlm) gave a solution, and with it set to 1 min so-called "cranks", I selected show waypoints and tried dragging them around. A nice feature of Qt is that if you drag a WP slightly above the close-hauled course, it will show a route in two tacks, and thus I quickly discovered you could make a clean lay all the way up inside that island and thus stay in stronger breeze longer than was available out there on the middle of the lake.

The second thing then was PL. With boatspeeds of above 12kn, that was c 6% every time you tacked and recovery was slow. And there wasn't anything much you'd be able to do about it, any time you wanted to tack. So, keep that tack count low. Aha, but if you knew how to avoid dropping below 92.5%, it was going to be better to execute the two tacks you were going to need to keep to the right of the course before hitting the lay through the channel between Kuopio (clearly) and Tikkalansaari (perhaps, maybe), close together. Think about it.

Despite the "iffy" topography, and the darkness of the online night, there can be little doubt that IRL this has to be a pretty place to go sailing. So thank you SOL for dragging us there, and pity that a combination of factors resulted in a much below average turn-out.