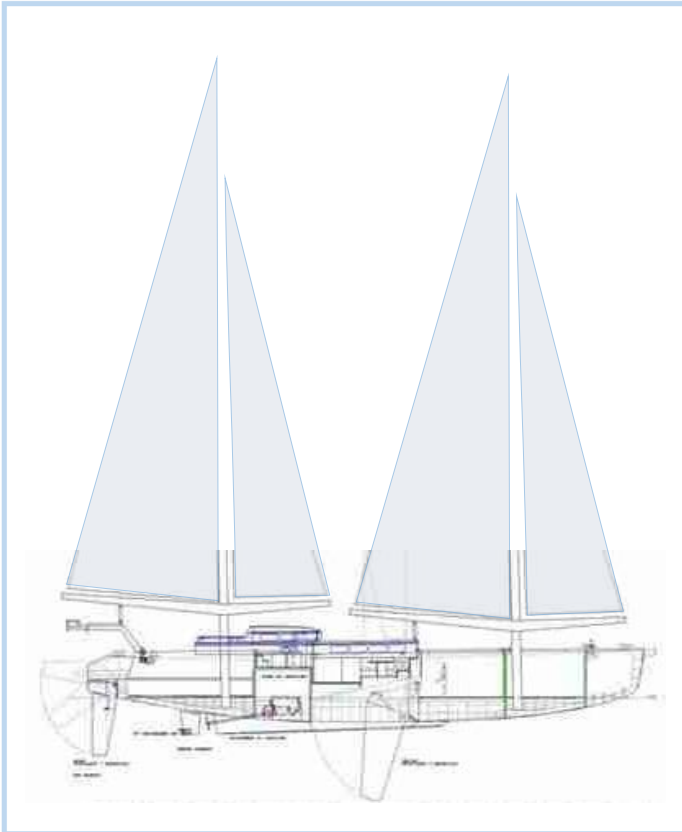
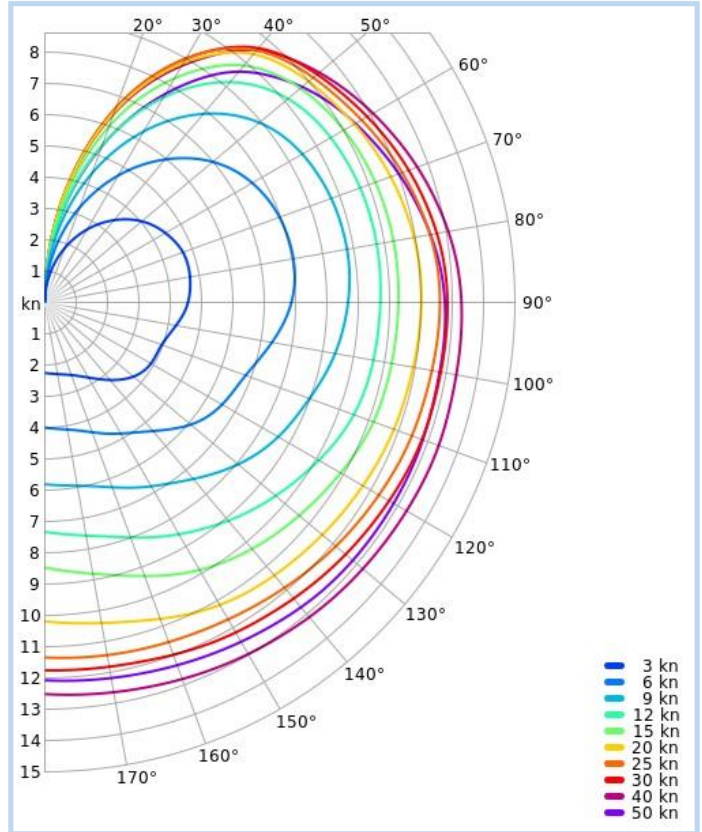


Paratii 2

GENERAL ARRANGEMENT



POLAR DIAGRAM



ACTION PHOTO



SOL RACE RECORD

"Anything that Chay Blyth and John Ridgway can do, I can do better", Amyr Klink may have thought when in 1984 he set off solo for a 3200nm row from Lüderitz in Namibia to Sao Paulo, eighteen years after Chay - chaff is your enemy - and John had rowed the 2600nm from Cape Cod to the Aran Isles!

And as it was for Chay, this was only the start of Amyr's adventures, which next took him to arctic waters in the first of his Paratii yachts, on board of which he wintered in Antarctica's Dorian Bay, then sailed to arctic Svalbard, wintered there as well, and sailed home to Brazil, to depart a few years later on a full circum-navigation of Antarctica.

Today, Paratii 2, a 29m heavy-gauge aluminium plated centre-boarder topped with a two-masted aero-rig is his yacht of choice, and you can sail her here in the most extreme climatic conditions from the comfort of your armchair!

Racelist